

MYEN

ELEVATION 8'

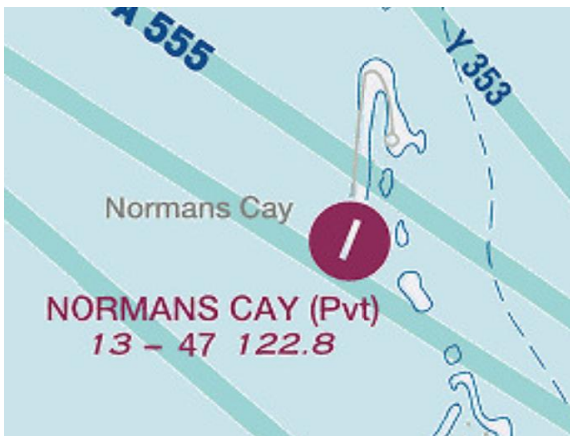
NORMAN'S CAY, EXHUMA

Airport Overview

Norman's Cay Airport (ICAO: **MYEN**, IATA: **NMC**) is a public-use airport located in Exhuma, Bahamas. The airport is located 44 miles southeast of Nassau.

Norman's Cay is an island airport at an elevation of 8 feet above mean sea level. It has one runway: 3-21 which is 4,703 by 80 feet with an asphalt surface.

The airport's runway is designed so that there is water at each end. A beach sits on the northwest side of the runway. Traffic pattern altitude is listed at 1,008 feet and there is no known fuel available at the airport.



Longest Runway

Lowest Published Approach Minimums

RWY 3-12:
4,703' x 80'

No Known Instrument Approaches

MYEN		ELEVATION 8'		NORMAN'S CAY, EXHUMA	
Runway	Surface	Runway Length	Runway Width	LDA	GA/TCH
3	ASPH	4,703	80	4,498	UNKWN
21	ASPH	4,703	80	4,498	UNKWN

Note: Displaced Threshold 205'

ATC		
TOWER:	Yes	No X
Notes: No known ARFF presence on the field		

Notes of Interest
<ul style="list-style-type: none"> • Airport surrounded by water • Displaced threshold at the end of Runway 3 & Runway 21 • No known control tower on the airport • No known instrument approach procedures • No known fuel available on the airport • Jan – Jun 2024 observed 278 known arrivals on business jets (77 arrivals were on Large and Super Long Range Jets) • Airport hours unknown

Safety Factors
<ul style="list-style-type: none"> • Airport surrounded by water • Remote Island • Non-towered Airport • No known ARFF presence on the airport • Back taxi Required for TO or Landing • Limited information available on the airport

Risk Analysis

Hazard	(Optional) Mitigations- Please fill in your own company mitigations
Non-Towered Airport	
Limited Emergency Services	
Water surrounding Runway	
Back taxi Required for TO or Landing	
No Known Instrument Approaches	