

MOUNT PLEASANT

KOSA

Elevation 364'

Mt.Pleasant, TX

[Airport Website](#)

Airport Overview

The award-winning Mount Pleasant Regional Airport officially opened in 2002 and is located three miles south of beautiful downtown Mount Pleasant off U.S. 271 South on Mike Hall Parkway. The airport is also home to the Mid America Flight Museum. Started in 2013 by Mount Pleasant resident and businessman, Scott Glover, the museum is a stunning collection of aircraft from a 1925 Waco Nine to the 1951 Grumman Albatross. And everything at the museum flies or is being restored to fly. The private-owned museum is open to the public on Saturdays, 10 a.m. to 2 p.m.

The airfield consists of a single taxiway that parallels the 6,000 ft runway (17/35) with several small joining taxiways, and a GA apron.



Longest Runway

RWY 17/35:

6,000 ft

Lowest Published Approach Minimums

LNAV/VNAV/RWY 35:

700' 1 & 1/4 (340)



MOUNT PLEASANT

KOSA

Elevation 364'

Mt.Pleasant, TX

Runway	Surface	Light System	Runway Length	Runway Width	LDA	GA/TCH	TDZE
17	Asphalt	MIRL, REIL, PAPI-L	6000'	100'	Not Listed	3.0/ 40'	364'
35	Asphalt	MIRL, REIL, PAPI-L	6000'	100'	Not Listed	3.0/ 45' Trees	342'
Heli	Concrete	Not Listed	44'	44'	Not Listed	N/A	--

Approach Review

Rwy	17	35
Type of approach and minimums .	RNAV—890' (526), 2 mi	RNAV/VNAV— 700' (340) 1&1/4 mi

ATC

UNICOM: 122.7

Yes

No

Notes: ARFF index N/A,
All Runways Load Bearing: S-30

AF/D Notes of Interest

- Attended 1300-0000Z±
- Deer and wildlife on and invof arpt.
- For Jet A aft hrs call 903-575-4004
- 100LL avbl 24 hrs self serv
- No line of sight between rwy ends

Terrain/Obstacles

- Highest tower : 928' elevation North of field
- Multiple towers in all quadrants above 500'

MOUNT PLEASANT

KOSA

Elevation 364'

Mt.Pleasant, TX

Safety Factors

- Multiple towers in all quadrants.
- Sloped Runway
- No line of sight between runway ends
- Limited Parking Space
- Uncontrolled Airport
- No Precision approaches

Additional Airport Notes

- Multiple locations for crew meals located in the town of Mount Pleasant.
- Aircraft stock (cabin): Walmart 10 min drive
- Hotels and lodging within 15 min
- Crew Cars available
- For after hours service call local Police on (903) 575 4004 (For emergency services dial 9-1-1)

Accident/incident History

A search of available databases revealed a list of 5 incidents. As the time frame exceeds 20 years we will highlight the one fatal. All 5 incidents were GA single engine piston aircraft primarily participating in flight training. The one fatal incident was a piper PA-32 piston, that impacted tree's 0.5 miles from the field on approach to landing. No cause has yet been assigned however it should be noted that one other aircraft in 1994 had a similar incident near by; where the pilot elected to overfly family members at low altitude and impacted telephone wires. These incidents warrant a review of approach, landing, low level flying procedures that may be in place prior to beginning operations to and from this airfield.

As for wildlife, no reports were available via the FAA wildlife database, this should predicate heightened vigilance, as this indicates a lack of reporting rather than a lack of wildlife.

Reference Documents (Double-Click on icon to retrieve)

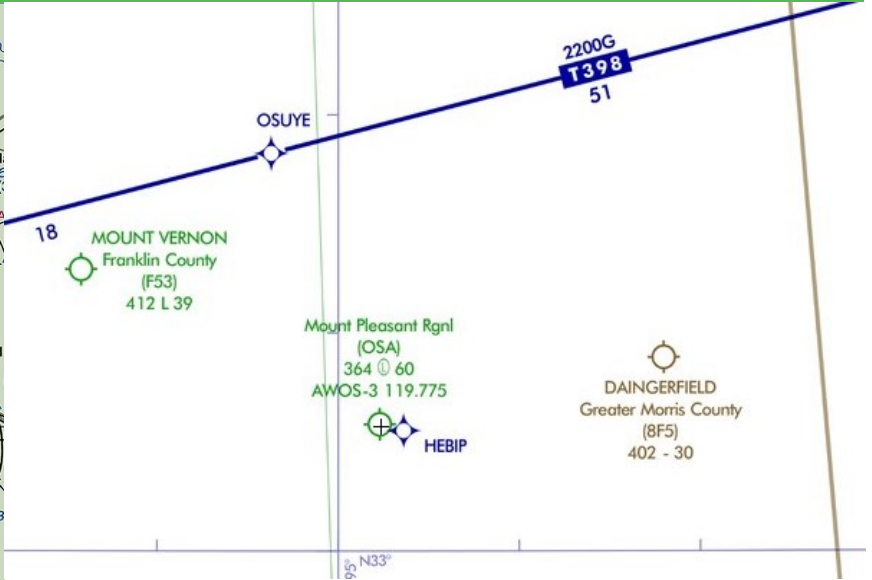
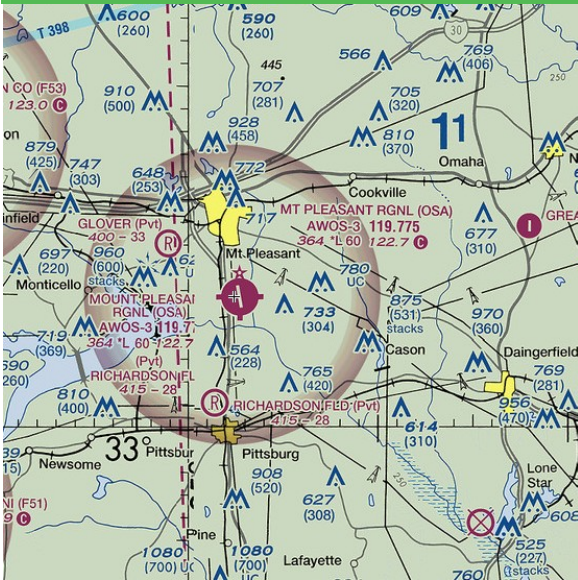
(AFD)	
	

MOUNT PLEASANT

KOSA

Elevation 364'

Mt.Pleasant, TX



Risk Analysis

Hazard	(Optional) Mitigations—Please fill in your own company mitigations
Multiple towers in all quadrants.	
Sloped Runway	
No line of sight between runway ends	
Limited Parking Space (Aircraft)	
Uncontrolled Airport	
No precision Approaches	