

# MALAGA/ COSTA DEL SOL

LEMG

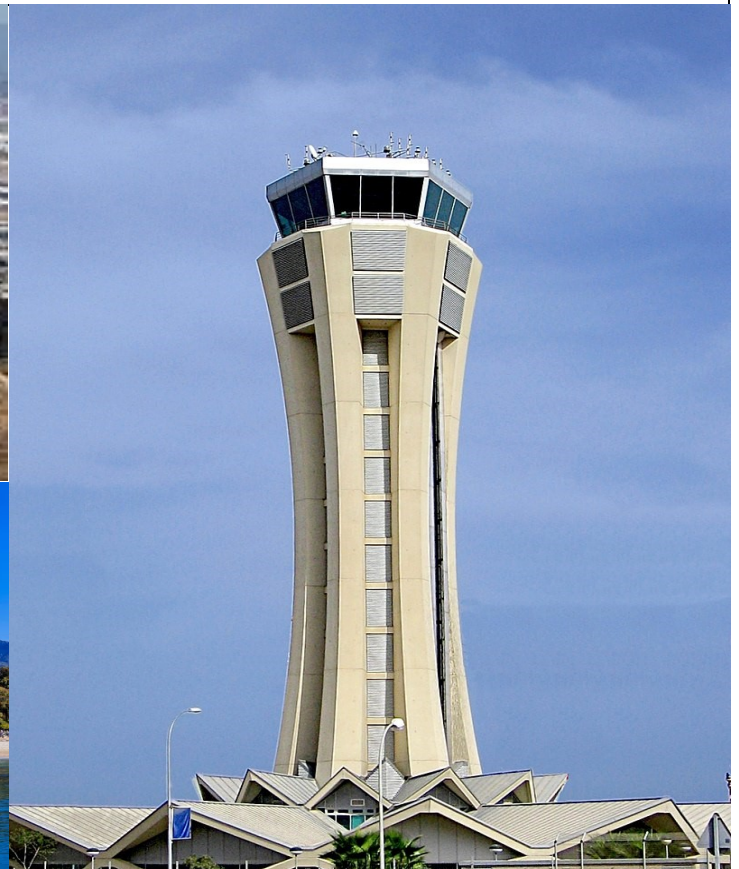
Elevation : 52 ft

Malaga, Spain

[Airport Website](#)

## Airport Overview

Malaga/ Costa del Sol Airport is located on the Mediterranean coastline of southern Spain. The coastline runs Northeast to Southwest. The city is surrounded by the Baetic Mountains with many peaks rising to between 300 feet and 7000 feet parallel to the coast. The airport is located to the southern side of the Guadalhorce River basin. Due to the rugged nature of the surrounding terrain, special engine out procedures and missed approaches in effect. Familiarity with both the CAA procedures and any company specific procedures are mandatory. As of 2023 the airfield is experiencing major renovations along its main runway surface 13/31. Non standard taxi routes and operations are prevalent. Heightened to extreme caution is advised when operating to and from LEMG.



Longest Runway	Lowest Published Approach Minimums
<p><b>RWY 13/ 31:</b> 10,499 ft x 148 ft</p>	<p><b>ILS Z RWY 13:</b> 295ft (243') R550m</p>



Updated: May 2023

# MALAGA/ COSTA DEL SOL

LEMG

Elevation : 52 ft

Malaga, Spain

Runway	Surface	Light System	Runway Length	Runway Width	LDA	TDZE
13		HIRL, CL, HIALS, PAPI (L+R)	10,499 ft	148	BYND G/S 9485 ft	52 ft
31		HIRL, CL, HIALS, PAPI (L+R)	10,499 ft	148	BYND G/S 9564 ft	31 ft
12		HIRL, CL, HIALS, PAPI	9022 ft	148	BYND G/S 7989 ft	44 ft
30		HIRL, CL	9022 ft	148	BYND G/S	30 ft

## Approach Review

13	31	12	30
ILS Z; ILS Y; LOC Z; LOC Y; GBAS Z; GBAS Y; VOR	ILS Y; ILS Z; LOC Z; LOC Y; GBAS Z; GBAS Y; VOR;	ILS-Z; ILS-Y; LOC Z; LOC Y; VOR	<b>None Permitted</b> <b>No Landing</b>

## ATC

TOWER:  Yes  No

Notes:

**Hotspots: Multiple severely impacting ground navigation. SEE NAVIGATIONAL CHARTS FOR DETAIL**

## Airport Remarks

- \*2023 Airport Renovations—Exercise caution due to presence of personnel & machinery.
  - Refer to latest NOTAMS for more info.
- RWY 12/30 only available per NOTAM and/or ATIS.
- PAPI RWY 12 not suitable for Code F aircraft.
- Takeoff RWY 12 Not Authorized; Landing RWY 30 Not Authorized.**
- If ATC indicates to an acft vacating the rwy to hold at the holding positions of twys E-1, E-2, E-3, E-4, E-5 or E-6, rwy shall be considered to be occupied.
- The areas encompassing ramps R3, R4, R5, and GA ramp R1 are not visible from the control tower.
- Noise sensitive areas.
- Birds in vicinity of airport.
- Circle to land is not authorized southwest of the runway.
- Helicopter operations on and in vicinity of airport.

## Terrain/Obstacles

- TERRAIN ALL QUADRANTS EXCEPT SE—USE EXTREME PREJUDICE
  - Airport surrounded by rapidly rising terrain to 3800' MSL within 9 NM.**
- Towers all quadrants except SE; Tallest tower within 10 miles West at 3461'

# MALAGA/ COSTA DEL SOL

LEMG

Elevation : 52 ft

Malaga, Spain

## Safety Factors

- Terrain/Obstacles
- Multiple Hotspots
- Complex Taxiway/ Runway exits
- Portions of Ramp not visible from tower
- Tight parking in GA ramp
- Airport construction
- Windshear/ Mountainous weather patterns
- At least one runway may not be grooved

## Additional Airport Notes

- General Aviation ramp R1 adjacent to RWY 31
- Joint Civil/Mil airfield
- Single tower/ Runway specific Tower Frequencies
- East/West ground control Frequencies

## Nearby VOR's

- MGA-112.0
- MLG-113.55

## Accident/incident History

A search of available databases both domestic and international revealed 0 reports between 2018 & 2023. This is not indicative of a lack of hazards, but a lack of available reports. Use extreme caution due to the proximity of mountainous terrain and frequency of operations.

## Weather Remarks

Fog averages 6 days per month. Smoke/haze highest incidences occur from May through September, averaging 8 days per month. Blowing dust/sand highest incidences are also reported from May through September, averaging 9 days per month.

## Reference Documents (Double-Click on icon to retrieve)

(AIP)

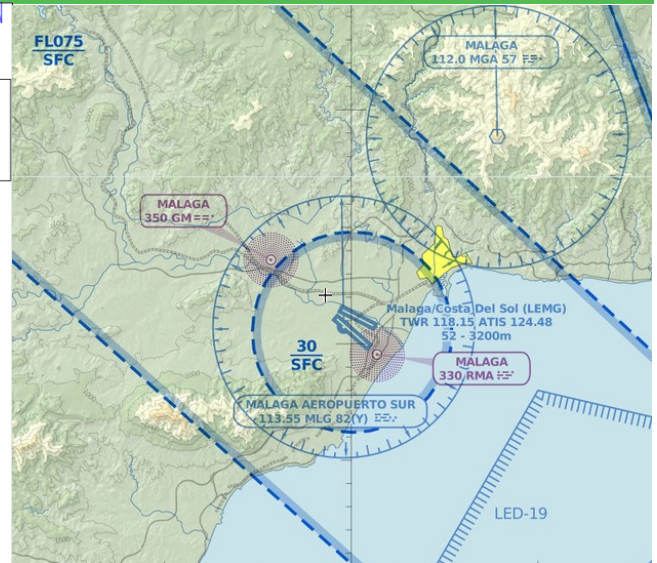
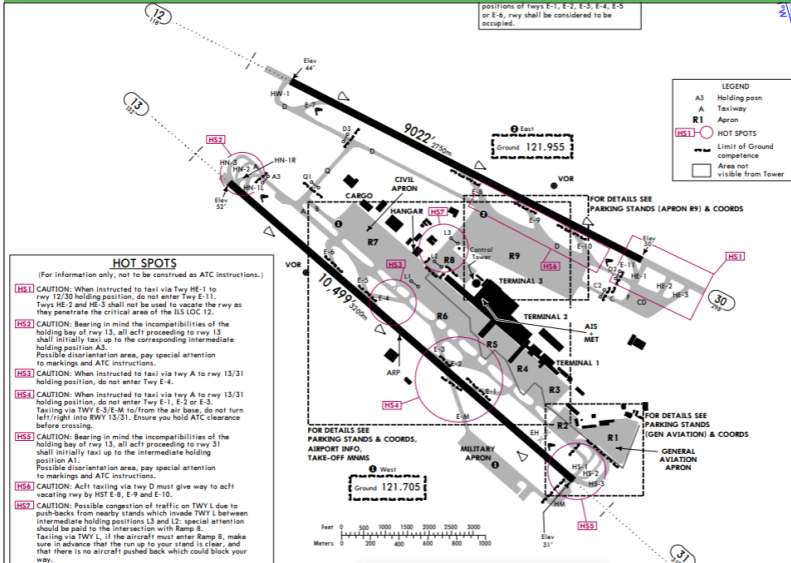


# MALAGA/ COSTA DEL SOL

LEMG

Elevation : 52 ft

Malaga, Spain



## Risk Analysis

Hazard	(Optional) Mitigations—Please fill in your own company mitigations
Terrain/Obstacles	
Multiple Hotspots	
Complex Taxiways/ Runway Exits	
Portions of Ramp not visible from tower	
Tight parking in GA ramp	
Airport construction	
Mountainous Weather Patterns/ Windshear	
At least one runway may not be grooved	