

# ZURICH AIRPORT

LSZH

Elevation : 1417 ft

Zurich, Switzerland

[Airport Website](#)

## Airport Overview

Zürich Airport (IATA: ZRH, ICAO: LSZH) also called Kloten Airport, is located in Kloten, canton of Zürich, Switzerland and managed by Unique Airport. It is Switzerland's largest international flight gateway and hub to Swiss International Air Lines. Sky guide is responsible for all Air Traffic Control for Zürich Intl.

Zurich Airport is located at the foot of the Alps in north central Switzerland. The Alps (with terrain above 5000 feet MSL within 25 NM) are in the south quadrant, while the Schwarzwald Mountains (with terrain above 4000 feet MSL within 30 NM) are in the northwest quadrant. The airport is at the northeast end of the Aare River Valley. This portion of the valley is wide and contains rolling hills. Patches of heavily wooded areas are between cultivated fields and urban development. Zurich Lake is 6 NM to the south. The Limmat River passes the airport 4 NM to the southwest and the Rhine River passes the airport 6 NM to the north. To the southwest, a man-made structure is at 3413 feet MSL within 7 NM.

Zürich airport railway station (Zürich Flughafen) is located underneath the terminal. There are trains to many parts of Switzerland; frequent S-Bahn services, plus direct Inter-regio and intercity services to Winterthur, Bern, Basel and Lucerne (Luzern). By changing trains at Zürich HB (Zürich main station) most other places in Switzerland can be reached in a few hours. Zürich Airport handled 19.2 million passengers in 2006. (ref: Wikipedia.org)



### Longest Runway

**RWY 16/34:**  
12,139 ft x 197 ft

### Lowest Published Approach Minimums

**ILS RWY 34:**  
**1588' (200') RVR 500m**

# ZURICH AIRPORT

LSZH

Elevation : 1417 ft

Zurich, Switzerland

Runway	Surface	Light System	Runway Length	Runway Width	LDA	TDZE
16	Concrete	HIRL, CL, HIALS-II, PAPI-L, TDZ, REIL	12,139 ft	197 ft	BYND G/S: 10,879'	1390'
34	Concrete	HIRL, PAPI-L, HIALS, REIL	12,139 ft	197 ft	THRSHLD: 10,597' BYND G/S: 9686'	1388'
14	Concrete	HIRL, CL, HIALS-II, TDZ	10,827 ft	197 ft	THRSHLD: 10,334' BYND G/S: 9187'	1402'
32	Concrete	HIRL, CL, REIL	10,827 ft	197 ft	10,827'	1402'
10	Concrete	RL, CL	8,202 ft	197 ft	BYND G/S 7205 ft	1391'
28	Concrete	HIRL, CL, HIALS, PAPI-L, REIL	8,202 ft	197 ft	8202'	1416'

## ATC

TOWER: 118.10

Yes

No

### Notes:

ARFF/Firefighting

**Hotspots:** HS-1: E,F, RWY 10/28; HS-2: J, K, RWY 10/28

## AF/D Notes of Interest

- Backtrack Rwy 16: Turn pad at THR 16. Turns are executed from LEFT to RIGHT only.
- Backtrack Rwy 34: Turns are executed at E9 from RIGHT to LEFT only.
- Bright flood light slightly North of approach to RWY 28 at DME 1.5 KLO (.5NM N from RWY 14).
- De-icing required on 130.375 from 0400-2230Z (Oct 01 - Apr 30).
- Noise abatement procedures in effect.
  - Airport uses a Flight Track Monitoring System to ensure compliance with the published procedures.
- Low Visibility Procedures (LVP)—ATC or ATIS will announce when LVP are in effect.
- APU use monitored by airport authority.
- Land and Hold Short Operations
- Arresting system (EMAS) is located at departure end of RWY 28
- Caution: Airport layout may cause runway confusion during approach.
- Caution: Do not mistake Dubendorf Airport, (located 5 NM southeast) for this airport.
- Caution: Low level turbulence may occur with westerly winds.

## Approach Review

16	34	14	32	10	28
ILS/LOC	ILS/LOC, VOR	ILS/LOC, RNP, GLS, VOR	-	-	ILS/LOC, RNP, VOR

# ZURICH AIRPORT

LSZH

Elevation : 1417 ft

Zurich, Switzerland

## Terrain/Obstacles

- Mountainous Terrain (the Alps) above 5000 feet MSL within 25 NM in the south quadrant
- Mountainous Terrain (Schwarzwald Mountains) above 4000 feet MSL within 30 NM in the northwest quadrant.
- Metropolitan Area– Rapidly changing Skyline/ Towers all quadrants
- To the southwest, a man-made structure is at 3413 feet MSL within 7 NM.

## Safety Factors

- Mountainous Terrain/Obstacles
- Winter Weather
- Windshear/ Mountain Waves
- Hot Spots
- Back Taxi possible
- SID/STAR Complexity

## Additional Airport Notes

- Port of Entry
- Special De-Ice instructions
- Follow EASA guidance on SID/STAR procedures
- Unspecified oxygen facilities are available
- Major airframe and engine repairs available
- Landing fee
- Starting unit is not available
- Beacon light not available
- Customs available without restriction

## Nearby VOR's

- TRA -114.30
- ZUE—110.05

## Reference Documents (Double-Click on icon to retrieve)

(AIP)



## Accident/incident History

A search of available databases yielded no significant reports from JUN 2018 to JUN 2023. No event based risk trend was determined.

## Weather Remarks

- Obstruction to visibility averages 25 days per month throughout the year. Fog averages 24 days per month while the highest incidences of smoke/haze occur from February through October, averaging 14 days per month during this period. Broken to overcast ceilings are the predominant sky conditions.

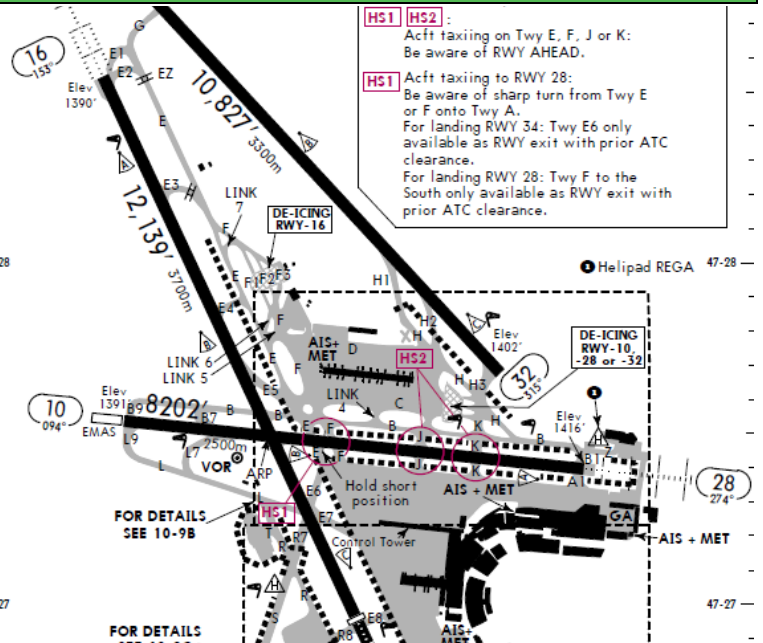
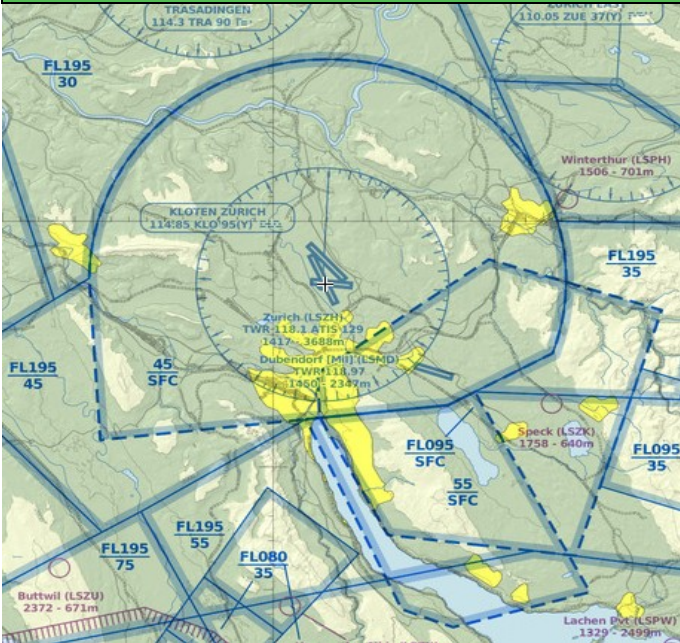
# ZURICH AIRPORT

LSZH

Elevation : 1417 ft

Zurich, Switzerland

## Additional Items:



## Risk Analysis

Hazard	(Optional) Mitigations—Please fill in your own company mitigations
Mountainous Terrain/Obstacles	
Winter Weather Operations	
Windshear/ Mountain Waves	
Back Taxi on RWY 16/34 Possible	
SID/STAR Complexity	
Hot Spots	