

PARK RAPIDS MUNICIPAL-KONSHOK FIELD

KPKD

Elevation 1,445'

Park Rapids, MN

[Airport Website](#)

Airport Overview

South of the city center is Park Rapids Municipal Airport (officially Konshok Field), a general aviation airport. According to the FAA, the airfield is publicly owned by the City of Park Rapids and has a physical address of 212 W. 2nd Street, Park Rapids, MN 5647 . It consists of four runways, Multiple approaches , and is serviced by a single FBO-Park Rapids Aviation. There is onsite maintenance. The airport services the town of Park Rapids Minnesota and the surrounding Hubbard County.



Longest Runway

Longest Runway 13/31:

5,497'x100

Lowest Published Approach Minimums

ILS RWY 31: 1644 and ½ mi. (200' - ½)

ADF required. ADF or Radar Required for procedure entry
Circling 18/36 NA at night.



PARK RAPIDS MUNICIPAL-KONSHOK FIELD

KPKD

Elevation 1,445'

Park Rapids, MN

Runway	Surface	Runway Length	Runway Width	LDA	GA/TCH
31	ASPH	5497	100	5497	P 3°/48'
13	ASPH	5497	100	5497	P 3°/48'
18	ASPH	3500	75	3500	P 3°/40'
36	ASPH	3500	75	3500	P 3°/40'

*Runway 31/13 Weight restrictions : S-20 D-36

Approach Review

RWY 31	RWY 13	RWY 18	RWY 30L
PAPI, MALSR, HIRL, REIL, ILS, LOC	PAPI, HIRL, REIL, RNAV (GPS)	PAPI, MIRL, REIL, RNAV/ GPS	PAPI, MIRL, REIL, RNAV (GPS)

ATC

TOWER:	<input type="checkbox"/> Yes	<input checked="" type="checkbox"/> No
CTAF and Unicom combined on 123.0		

AF/D Notes of Interest

- AIRPORT REMARKS: Attended Mon–Fri 1400–2300Z±. For svc aft hrs call 218–237–8528.
- FUEL 100LL, JET A
- LGT ACTVT or incr intst MALSR Rwy 31; REIL Rwy 13, 18 and 36; PAPI Rwy 13, 31, 18 and 36; HIRL Rwy 13 –31 preset low intst SS–SR.

Terrain/Obstacles

- Multiple Towers within 5 miles of Airport, Highest at 699' AGL north of Approach corridor RWY 31/13

Safety Factors

- Possible Light pollution at night due to proximity of town and multiple Highways
- Limited Emergency Services
- Un-towered
- Crossing Runways
- Taxi Back only off Runway 18/36

PARK RAPIDS MUNICIPAL-KONSHOK FIELD

KPKD

Elevation 1,445'

Park Rapids, MN

Additional Airport Info

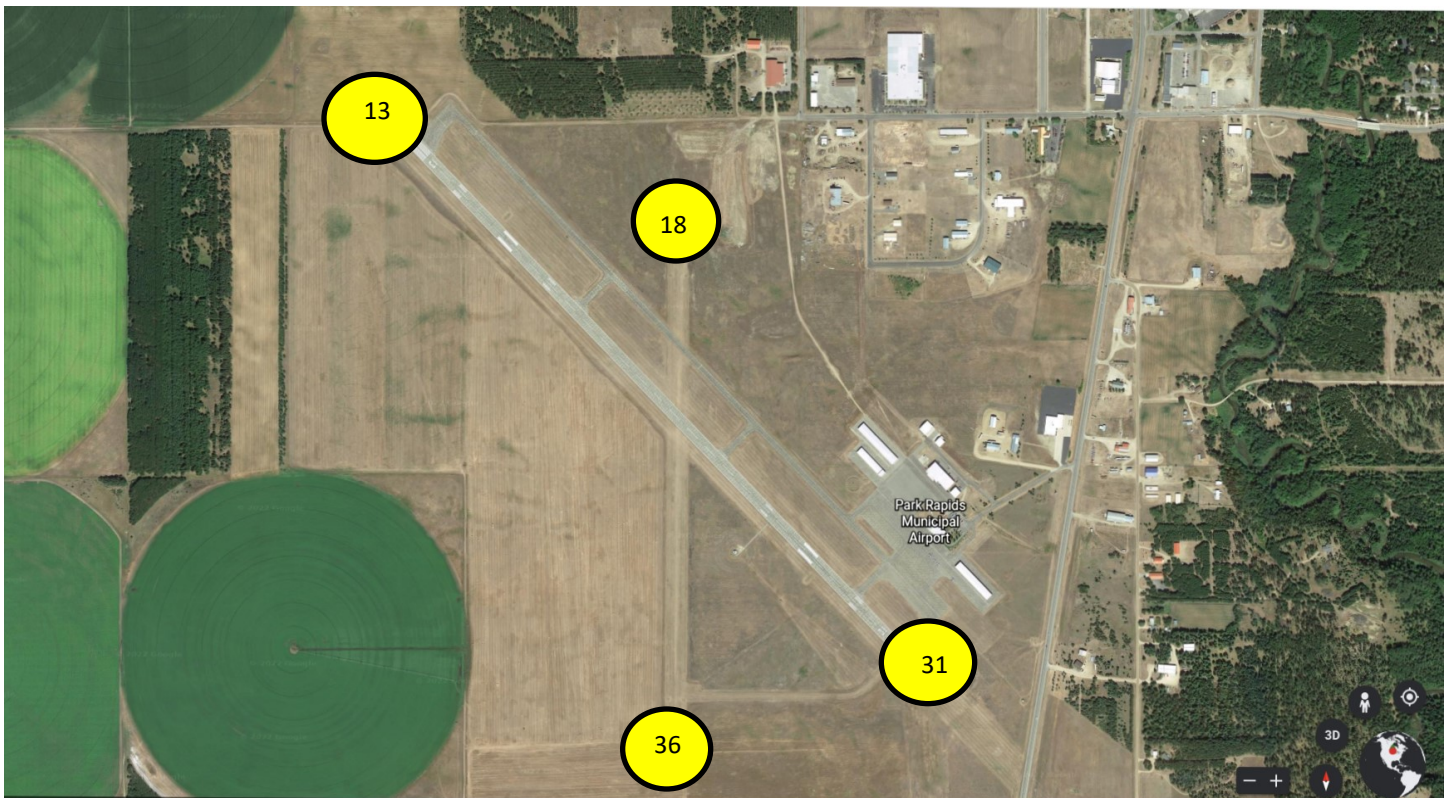
- Aircraft maintenance is available on site– Powerplant & Airframe
- Lodging is limited but available in the town of Park Rapids
- Rental Car availability is unknown

Accident/incident History

A search of available databases found no accident or incident reports from JAN 2017 to FEB 2022. There were two wildlife strikes in the area resulting in no more than minor damage to a light twin PA-44 Seminole.

Reference Documents (Double-Click on icon to retrieve)

(AFD)			

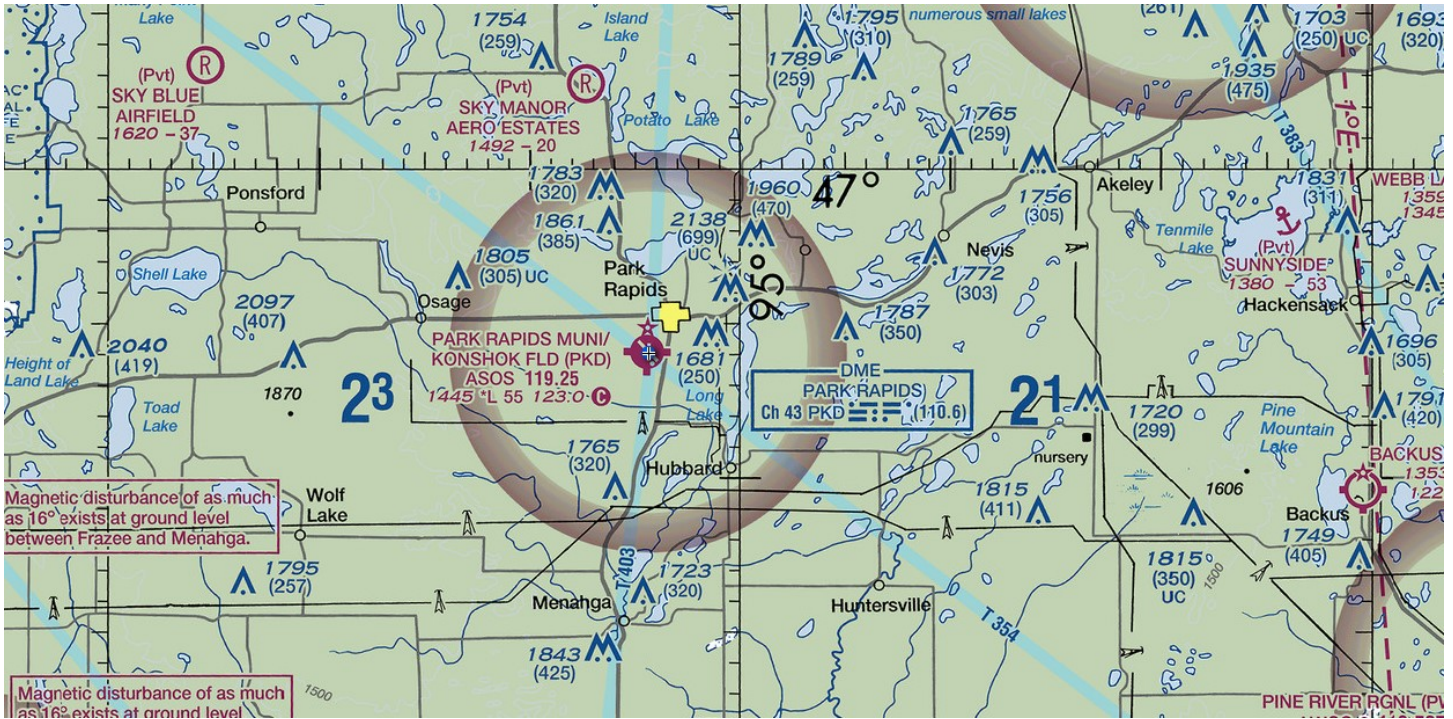


PARK RAPIDS MUNICIPAL-KONSHOK FIELD

KPKD

Elevation 1,445'

Park Rapids, MN



Risk Analysis

Hazard	(Optional) Mitigations—Please fill in your own company mitigations
Crossing Runways	
Wildlife	
Un-towered	
Limited Emergency Services.	