

FLORENCE AIRPORT, PERETOLA

LIRQ

Elevation 142'

Florence, Italy

[Airport Website](#)

Airport Overview

LIRQ is one of two airports located in the Tuscany region of Italy. Florence Airport is a small airport with a single runway and one main taxiway which is located at the end of runway 05. As is common with smaller airports, after landing planes turn around at the end of the runway, then taxi back down the runway to reach the parking area and terminal.

Pilots should be aware of the increased risk of runway incursions or traffic conflicts due to the necessary back taxi procedures. Flight crews should also anticipate the possibility of low level wind shear due to the surrounding terrain.

There are regional scheduled commercial services operating at the airport, serving a variety of European destinations.



Longest Runway	Lowest Published Approach Minimums
<p>RWY 05/23</p> <p>5118 x 98'</p>	<p>ILS Z RWY 05</p> <p>645' (522)</p>

FLORENCE AIRPORT, PERETOLA

LIRQ
Elevation 142'
Florence, Italy

Runway	Surface	Runway Length	Runway Width	LDA	GA/TCH
05	ASPH	5118/ TORA: 5265	98	4774	P 3°/48'
23	ASPH	5118 / TORA: 5492	98	3205	P 4° /46'

Conversion done by PRISM actual distances reported in Meters. Confirm with official publication.

ATC

TOWER:



Notes:

- Administration Phone Number: +39 055 3061709
- ARFF—ICAO Category 6

AF/D Notes of Interest

- PAPI for RWY 23 available and usable only in the final part of the circling approach.
- VOR RWY 05—Final approach track at 1400m lies 201m north of extended centerline.
- Noise abatement procedures in effect.
- Takeoff and initial climb from RWY 05 must be performed during daylight hours only and under visual conditions. Only RWY 23 is suitable for departure operations with RVR less than 550m but not less than 250m.
- Due to limited airport capacity aircraft are subject to the issue of a PPR to land and take off from Florence Airport.
- RWY 23 PAPI offset 5 degrees towards East.
- Obstacle clearance surface affected by obstacles beyond 2200m from THR RWY 23.
- Airport is occasionally affected by terrain-induced wind shear, usually originates with winds between 5-20kts in intensity and a NE direction and occurs most often in the months of December and January.
- Birds in the vicinity all year with higher concentrations between May and October.

Safety Factors

- Windshear induced by nearby terrain.
- Black hole effect on approach to RWY 23 due to unlighted terrain.
- CFIT due to nearby mountainous terrain.
- Increased risk of runway incursion or traffic conflict due to lack of taxiway.

Terrain/Obstacles

- Terrain and obstacles up to 2549' within 3nm N-E of airport.
- Mountainous terrain surrounds airport. Terrain rises in all directions with some peaks as high as 7100'.



FLORENCE AIRPORT, PERETOLA

LIRQ


Elevation 142'

Florence, Italy

Approach Review

RWY 05	RWY 23
PAPI, ILS Z, ILS W, ILS V, VOR, Visual	PAPI, Visual

Reference Documents (Double-Click on icon to retrieve)

(AIP)	
	

Accident/incident History

A search of available databases yielded 1 report . Event based risk trend could not be identified; however, below is the narrative from the one reported accident.

Narrative:

CityJet flight WX281 was involved in a hard landing incident at Florence Airport (FLR), Italy. The aircraft, an Avro RJ85, landed hard on runway 05 at 13:19 local time.

FBO Information

Date: 11/2022

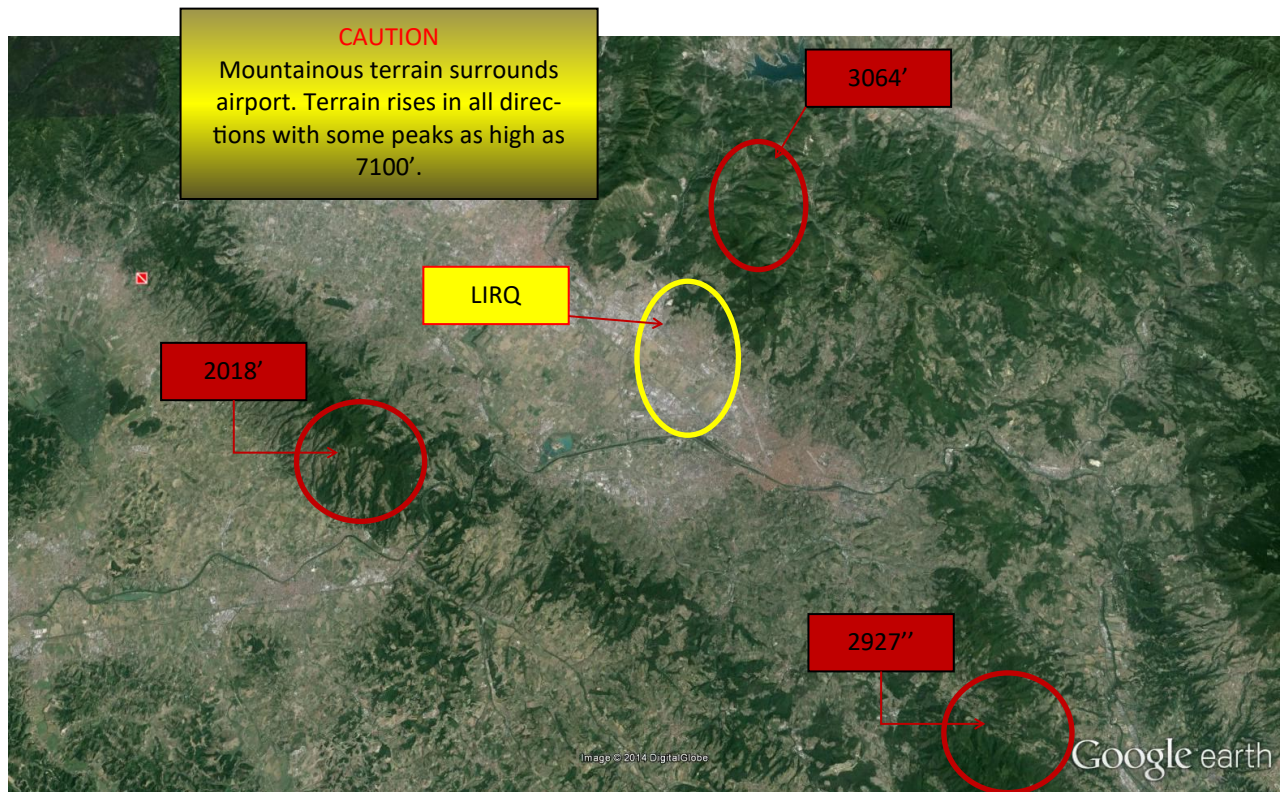
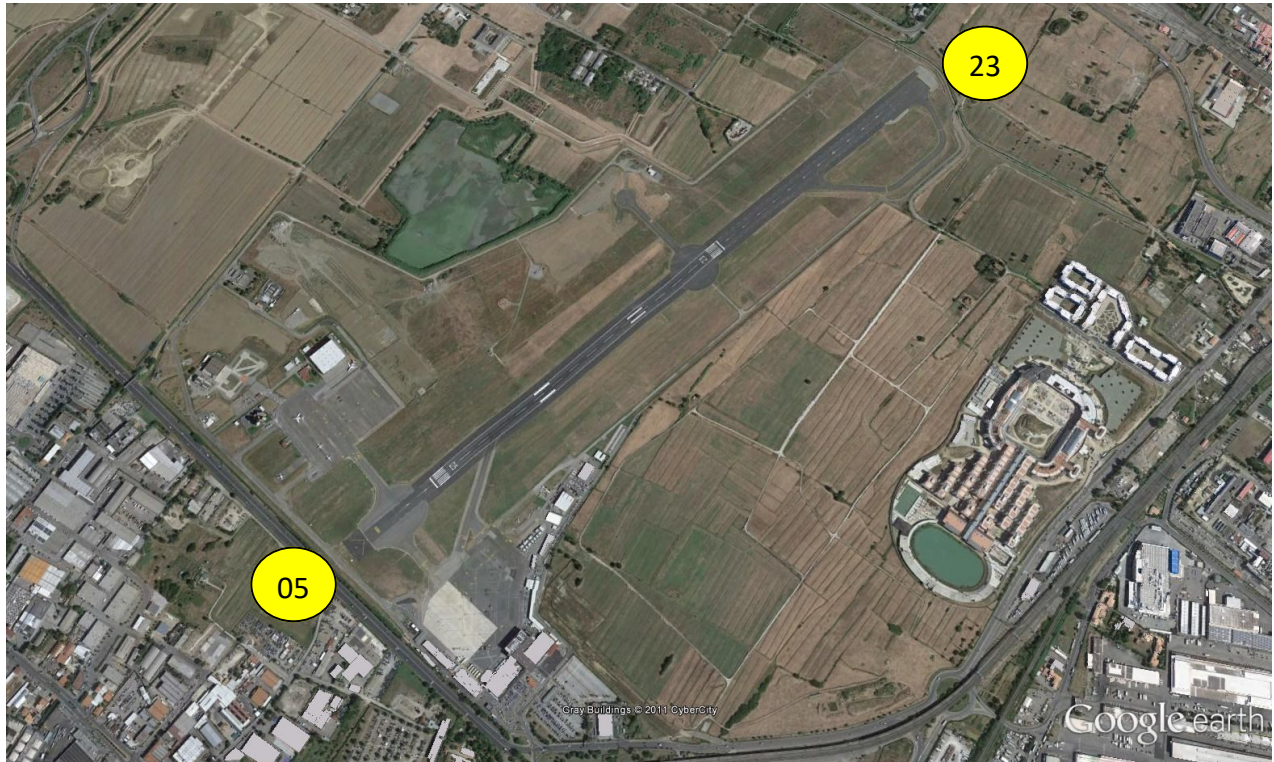
- Delta Aerotaxi/Corporate Air Service (FBO) +39 055 300 450
- Signature Flight Support (Agent) +39 393 8861 929
- Sky Services (Agent) +39 081 552 2421 x22
- Toscana Aeroporti (Handler) +39 055 306 1630

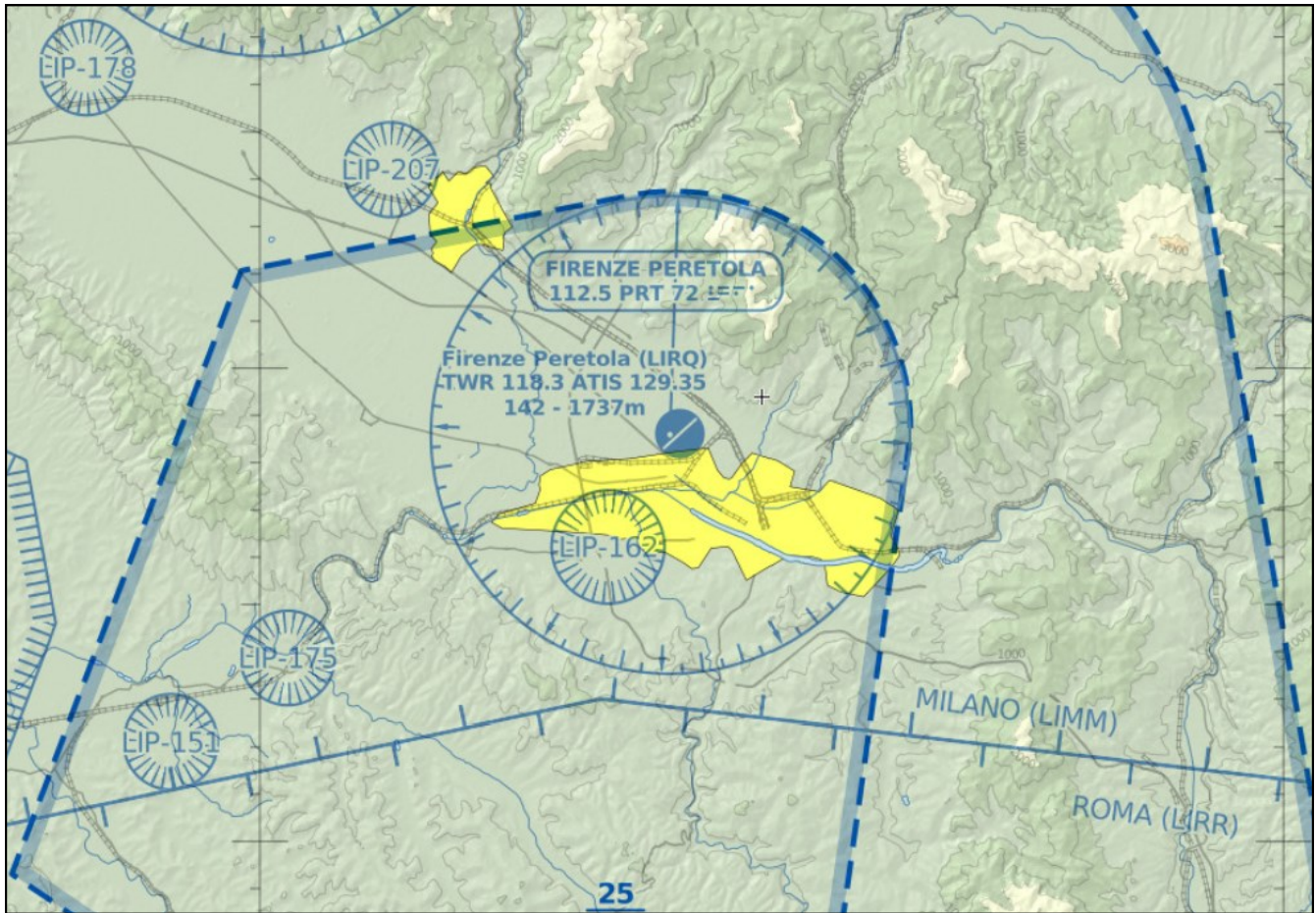
FLORENCE AIRPORT, PERETOLA

LIRQ

Elevation 142'

Florence, Italy





Risk Analysis

Hazard	(Optional) Mitigations—Please fill in your own company mitigations
Windshear induced by nearby terrain.	
Black hole effect on approach to RWY 23 due to unlighted terrain.	
CFIT due to nearby mountainous terrain.	
Increased risk of runway incursion or traffic conflict due to lack of taxiway.	



FLORENCE AIRPORT, PERETOLA

LIRQ

Elevation 142'

Florence, Italy

Country Info (travel.state.gov)

Travel Advisory
October 4, 2022

Italy - Level 2: Exercise Increased Caution

Exercise increased caution due to terrorism.

Last Update: Reissued with updates to health information.

Exercise increased caution due to **terrorism**.

Country Summary: Terrorist groups continue plotting possible attacks in Italy. Terrorists may attack with little or no warning, targeting tourist locations, transportation hubs, markets/shopping malls, local government facilities, hotels, clubs, restaurants, places of worship, parks, major sporting and cultural events, educational institutions, airports, and other public areas.

Quick Facts

PASSPORT VALIDITY:

Six months validity recommended, at least 3 months validity beyond your planned date of departure from the [Schengen area](#).

BLANK PASSPORT PAGES:

Two pages required for entry stamp.

TOURIST VISA REQUIRED:

Not required for stays under 90 days.

VACCINATIONS:

None.

CURRENCY RESTRICTIONS FOR ENTRY:

10,000 Euros or equivalent.

CURRENCY RESTRICTIONS FOR EXIT:

10,000 Euros or equivalent.

U.S. Embassies and Consulates (travel.state.gov)

[U.S. Consulate General Florence](#)

Lungarno Amerigo Vespucci, 38
50123 Florence, Italy

Telephone: +(39) 055-266-951

Emergency After-Hours Telephone: +(39) 06-4674-1

Fax: +(39) 055-215-550

Email: uscitizensflorence@state.gov

The Florence consular district includes the regions of Tuscany and Emilia-Romagna (all except the Provinces of Piacenza and Parma), as well as the Republic of San Marino.

[U.S. Embassy Rome](#)

Via Vittorio Veneto, 121

00187 Rome, Italy

Telephone: +(39) 06-4674-1

Emergency After-Hours Telephone: +(39) 06-4674-1

Fax: +(39) 06-4674-2244

Email: uscitizensrome@state.gov

The Rome consular district includes the regions of Lazio, Marche, Umbria, Abruzzo, and Sardinia.

[U.S. Embassy to the Holy See](#)

Via Sallustiana, 49

00162 Rome, Italy

Telephone: +(39) 06-4674-1

Emergency After-Hours Telephone: +(39) 06-4674-1

Fax: +(39) 06-575-8346

[U.S. Consulate General Florence](#)

Lungarno Amerigo Vespucci, 38

50123 Florence, Italy

Telephone: +(39) 055-266-951

Emergency After-Hours Telephone: +(39) 06-4674-1

Fax: +(39) 055-215-550

Email: uscitizensflorence@state.gov

The Florence consular district includes the regions of Tuscany and Emilia-Romagna (all except the Provinces of Piacenza and Parma), as well as the Republic of San Marino.