

# RAFAEL NUNEZ INTL AIRPORT

SKCG

Elevation 7'

Cartagena, Columbia

[Airport Website](#)

## Airport Overview

**Rafael Núñez International Airport (ICAO: SKCG)** is an airport serving the Caribbean port city of Cartagena, Colombia. It is the largest airport in the country's northern Caribbean region in terms of passenger movement. It is located between the Caribbean coast and the Ciénaga de la Virgen marsh, in the center of Crespo, a neighborhood in northern Cartagena.

The airport has been managed since 1996 by the **Sociedad Aeropuertos del Caribe S.A. (SACSA)**, a Colombian company that has the experience and technology of its partner operator AENA Spain. Airlines including Copa Airlines Colombia, Copa Airlines, Avianca, JetBlue, Spirit Airlines, and Delta Air Lines have international flights from this airport to various cities in North, Central and South America. (COVID reduced schedules may apply)



Longest Runway	Lowest Published Approach Minimums
<p><b>RWY 01-19:</b> 8333 x 148'</p>	<p><b>ILS RWY 01:</b> ILS minimums 250 (243') 1300M</p>

# RAFAEL NUNEZ INTL AIRPORT

**SKCG**

**Elevation 7'**

**Cartagena, Columbia**

Runway	Surface	Runway Length	Runway Width	LDA	TDZE	GA/TCH
<b>01</b>	<b>ASPH</b>	<b>8333</b>	<b>148</b>	<b>8333</b>	<b>7'</b>	<b>P 3°/62'</b>
<b>19</b>	<b>ASPH</b>	<b>8333</b>	<b>148</b>	<b>8333</b>	<b>7'</b>	<b>P 3°/69'</b>

ATC	
TOWER:	<input checked="" type="checkbox"/> Yes <input type="checkbox"/> No
Notes: ARFF CAT 7	

AF/D Notes of Interest
<ul style="list-style-type: none"> <li>Birds invof arpt.</li> <li>Do not fly west of airport below 2500' MSL due to restricted area.</li> </ul>

Airport Comments
<ul style="list-style-type: none"> <li>***Airport has daily runway closures, additionally verification of approaches was not possible, while the Approaches highlighted are listed, no firm data was obtained on usability.</li> <li>Use caution for well documented local safety concerns. The attached link to the State Dept. website is highly recommended: <a href="http://Colombia International Travel Information (state.gov)">Colombia International Travel Information (state.gov)</a></li> <li>The primary FBO is MillionAir, Use of a vetted handler is HIGHLY recommended.</li> <li>Yellow Fever Vaccines may be required for some travelers. (dependent on final destination)</li> </ul>

Terrain/Obstacles
<ul style="list-style-type: none"> <li>Caution: buildings located in the path of RWY 01 approach.</li> <li>Multiple close-in tower immediately west of arpt up to 695' MSL.</li> </ul>

Safety Factors
<ul style="list-style-type: none"> <li>No parallel taxiway increases risk of runway incursion. (Taxi Back Operations)</li> <li>Black hole effect on overwater night approach.</li> <li>Language Barriers</li> <li>Tropical Weather patterns</li> <li>Restricted Area to the West of the Airfield.</li> </ul>

Approach Review	
RWY 01	RWY 19
PAPI, RNAV(GNSS), VOR, ILS	PAPI, RNAV(GNSS)

# RAFAEL NUNEZ INTL AIRPORT

SKCG


Elevation 7'

Cartagena, Columbia

## Accident/incident History

A search of available databases yielded no reports from FEB 2017 to FEB 2022. No event based risk trend was determined.

## Reference Documents (Double-Click on icon to retrieve)

(AIP)			
			

2/14/22, 9:59 AM

Google Earth





# RAFAEL NUNEZ INTL AIRPORT

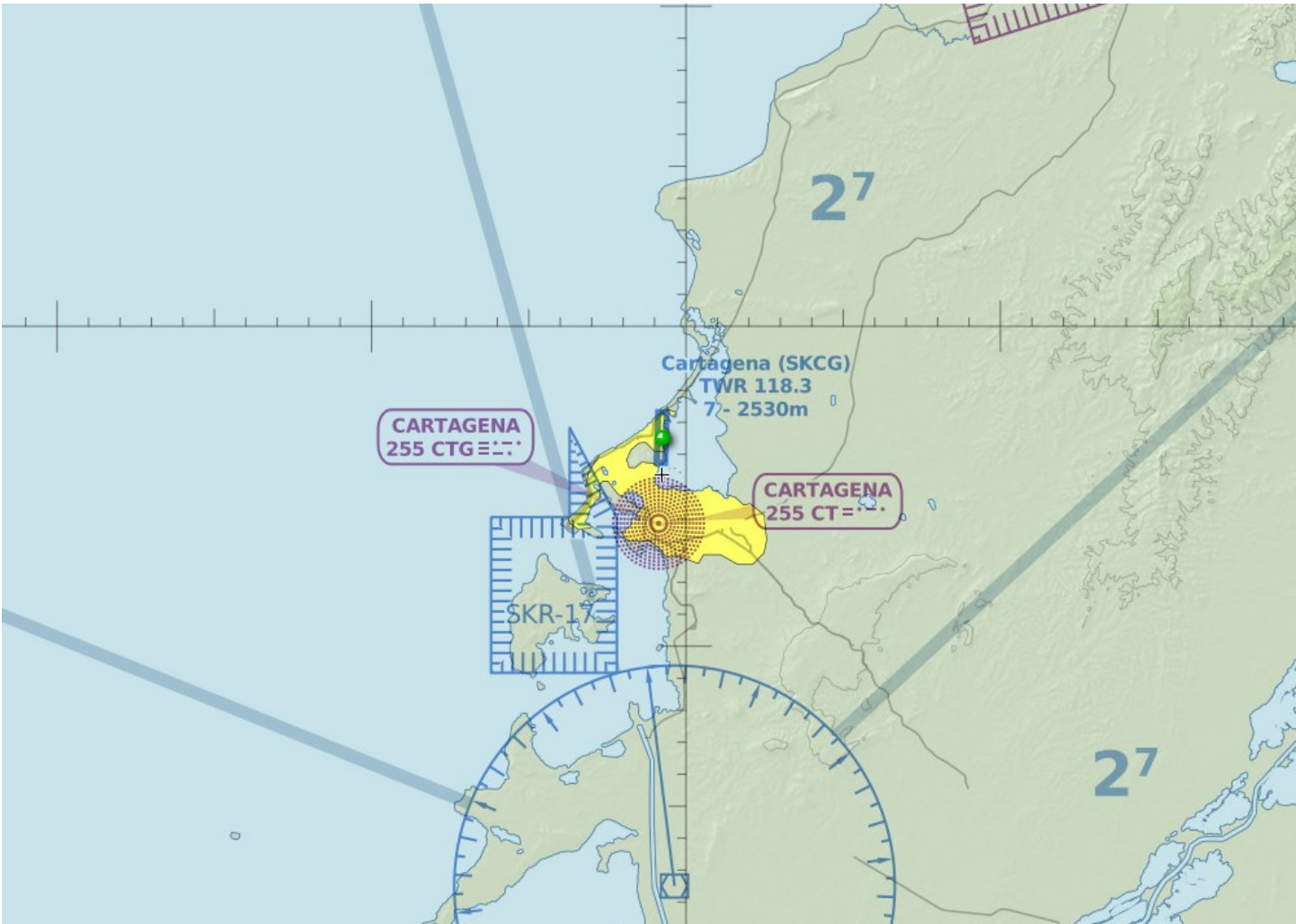
SKCG

Elevation 7'

Cartagena, Columbia







### Risk Analysis

Hazard	(Optional) Mitigations—Please fill in your own company mitigations
No parallel taxiway increases risk of runway incursion. (Taxi Back Operations.)	
Black hole effect on overwater night approach.	
Restricted Area	
Language Barriers	
Weather	