

VICTORIA FALLS

FVFA

Elevation : 3500ft

Victoria Falls, Zimbabwe

Airport Overview

Co-Ordinates: S 18°5.65' / E 25°50.40'

Victoria Falls is one of two airports serving the town of Livingstone and the falls. There is regular airline service from several destinations; most prominently South Africa. The airport is the home base of several tour operators and the chaotic nature of those operations makes for a busy environment. The airfield has a single runway surface aligned 12/30 with a total length of 13,123 ft. Customs and Immigration are available from 0400 to 1600 daily. The airport was recently improved by investment from China and great strides have been made in the efficiency of operations. GA Parking is located adjacent to the main terminal. At the time of this report no information on a Biz Av lounge was readily available and handling services are recommended; they are available with prior notice.



Longest Runway	Lowest Published Approach Minimums
<p>RWY 12/30</p> <p>13,123 ft x 148 ft</p>	<p>ILS-12</p> <p>CAT A/B/C: 3700 ft (200)</p> <p>CAT D: 3710 ft (210)</p> <p>RVR: (Full) 550m</p>

VICTORIA FALLS

FVFA

Elevation : 3500ft

Victoria Falls, Zimbabwe

Runway	Surface	Light System	Runway Length	Runway Width	LDA	TDZE
12	Concrete	HIALS, HIRL, CL, TDZ, PAPI-L	13,123 ft	148 ft	12,030 ft for LNDG BYND GS	3500 ft
30	Concrete	HIRL, MI-ALS, PAPI-L	13,123 ft	148 ft	13,123 ft	3472 ft

Approach Review

ILS 12			VOR 30		
CAT A/B/C: 3700 ft	CAT D 3710 ft	RVR:550	CAT A: 3790/ CAT B: 3810/ CAT C: 3830/ CAT D: 3850		
ILS FREQ: 110.70	CRS: 118		CAT A/B/C RVR: 1200 CAT D RVR: 1800		
CAT II available (<i>Not Shown</i>)			New Procedure		
Procedure restricted 220kts			CRS 297 VOR FREQ: 116.7		
Procedure Turn			Procedure restricted 220kts		

ATC

TOWER: 121.10	<input checked="" type="checkbox"/> Yes <input type="checkbox"/> No
---------------	---

Notes:

RWY Load Bearing All Rwy's: PCN60/F/A/W/T
 Fire Service on-site ICAO Cat-7
DO NOT FLY NORTH OF ZAMBEZI RIVER
 Procedure restricted to 220kts max
 IN available on request, default measurement hPa

AF/D Notes of Interest	Nearby VOR
<ul style="list-style-type: none"> Special Use Airspace over falls All Aircraft request permission to start 121.10 LDG RWY 30 Medium and Heavy arcft to turn at RWY end before backtracking Aircraft NOT TO operate north of Zambezi River All Pilots flying overhead Victoria Falls to maintain an altitude of not less than 5000 ft 	<ul style="list-style-type: none"> VFA 116.70 – Victoria Falls VLI 112.50 – Livingstone KAV 113.30—Kasane VWN 114.50—Hwange

Terrain/Obstacles

- None in the immediate vicinity

VICTORIA FALLS

FVFA

Elevation : 3500ft

Victoria Falls, Zimbabwe

Safety Factors

- Language Barrier
- Unique Procedures– Missed Approach, Special Use airspace etc.
- Heavy Sight seeing/ Tour air traffic
- Single Runway
- Taxi back operations for large aircraft

Additional Airport Notes

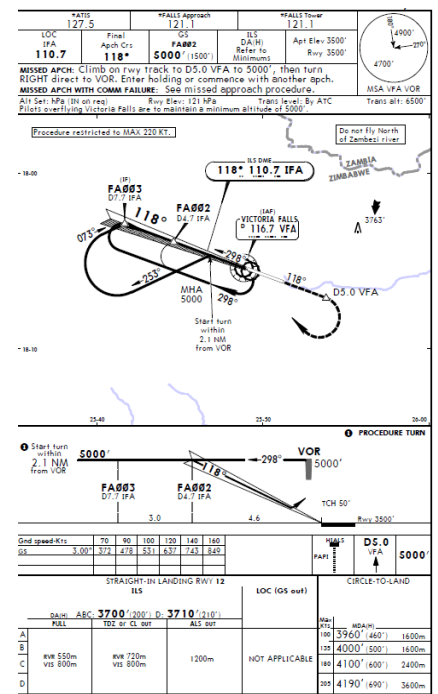
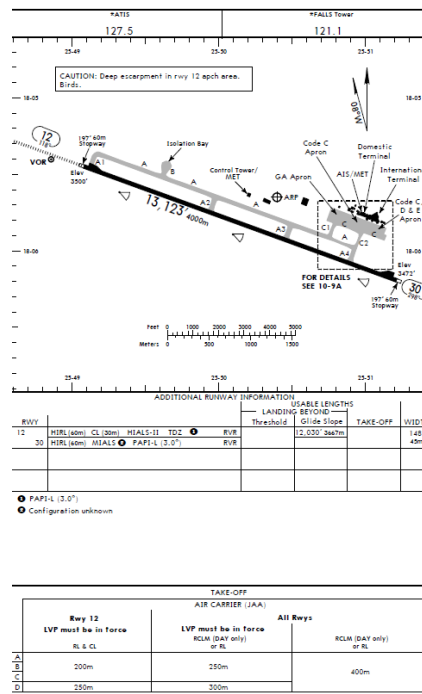
- MX Not available
- Hotels located 17 mi away in Town
- Transportation is available but prior arrangements are advised
- Handling service on request +263 13 44665 or +263 712 882 870
- No wx radar
- Restaurant available in terminal during operational hours
- Jet A1 available 0500 to 1600 LCL – Truck

Accident/incident History

At the time of this report, no information was available from Zimbabwe’s Controlling Agency. Heightened caution is advised based on the definitive lack of information.

Reference Documents (Double-Click on icon to retrieve)

(AIP)



VICTORIA FALLS

VFVA

Elevation : 3500ft

Victoria Falls, Zimbabwe



Additional Items:

- State Department Level 2 Security/Travel Advisory
- <https://travel.state.gov/content/travel/en/international-travel/International-Travel-Country-Information-Pages/Zimbabwe.html>
- Tourist Visa required, can obtain at port of entry
- Yellow Fever Vaccination
- 2 Blank Passport Pages

Risk Analysis

Hazard	(Optional) Mitigations—Please fill in your own company mitigations
Language Barrier	
Unique Procedures – Missed Approach, Special Use Airspace, etc.	
Heavy Sightseeing Traffic	
Single Runway Surface	
Taxi-back Operations for large aircraft	