

SRI GURU RAM DASS JEE INTERNATIONAL

VIAR

Elevation 760'

Amritsar, India

[Airport Website](#)

Airport Overview

Co-ordinates: N31°42.64' / E74°48.01' : Sri Guru Ram Dass Jee International Airport is a class D airspace airport located in the Punjab province of India, and serves the city of Amritsar and its surrounding territory. It is located 11km (7 mi) northwest of Amritsar city center, nearby the village of Rajasansi. It consists of a single Runway 16/34 that is 3,658m (12,000ft) in length. The main terminal is located off the right hand side of Runway 34. The airport is approved for CAT-II / III approaches to runway 34 and each runway end is equipped with ALS and PAPI light systems. A detailed search found no FBO's on site, however several handling agencies were listed. There are customs services, fuel available, and Fire fighting services on site. No transient maintenance facilities were listed. There are regular flights to both domestic and international destinations as well as a flying club/ flight school located on the field. The frequent dense fog and warm climate present natural hazards.



Longest Runway

RWY 16/34:
3658m x 45m
12001 ft x 150ft

Lowest Published Approach Minimums

ILS RWY 34
DA 1050'
Vis- RVR 650m

SRI GURU RAM DASS JEE INTERNATIONAL

VIAR

Elevation 760'

Amritsar, India

Runway	Surface	Light System	Runway Length	Runway Width	LDA	TDZE
16	Asphalt	HIRL, HIALS, PAPI (left)	3658 m	45m	3658m	760 ft
34	Asphalt	HIRL, CL,HIALS-II, TDZ, PAPI (left)	3658 m	45m	3658m	757 ft

Approach Review	
RWY 16	RWY 34
VOR– MDA: 1190 CDFA Appch	ILS– DA: 1050 ILS Z includes DME Arc

ATC

TOWER: Amristar
124.35/ 118.15

Yes

No

Notes:

Fire Fighting: ATS HR: CAT-8 (9 available with prior notice)

VOR located on field: Designator AAR– 115.5

All Runways Load Bearing: PCN: 91/F/C/W/T

AF/D Notes of Interest

- Attended Mon–Fri 0400-1230 UTC.
- No De-Ice
- No MX
- MON-FRI 1100-1300 RWY 16/34 not AVBL for OPS due SKED maintenance In case of emergency, RWY can be made AVBL, with 20MIN PN.**
- Handling services with prior arrangement
- RVR– TDZ, MID, END

Nearby VOR's

- | | | |
|---------------|---------|--------|
| • LA — 112.70 | Lahore | 23.5nm |
| • SLT— 113.80 | Sialkot | 53.7nm |
| • JJU— 115.50 | Jammu | 58.8nm |

Contact : Airport Director Airports Authority India

+91-183-2214118 apdasr@aai.aero
+919464662200

Terrain/Obstacles

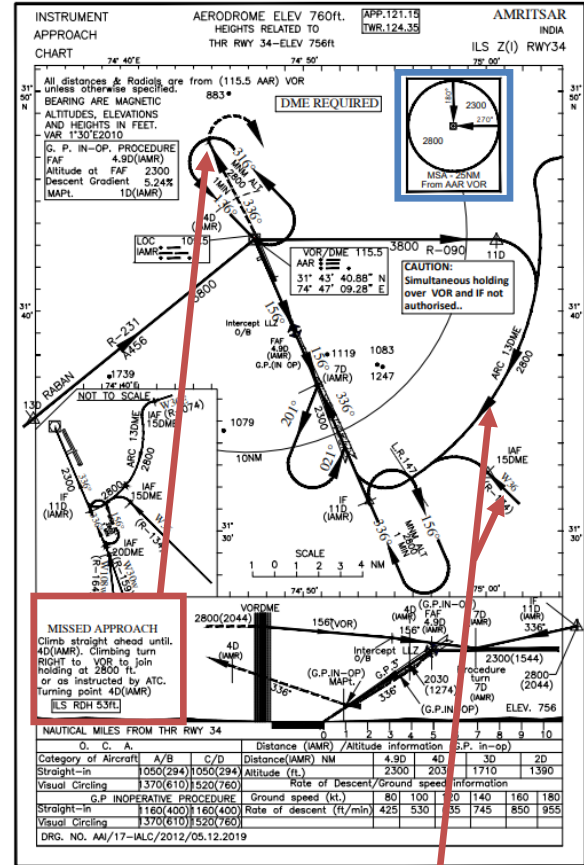
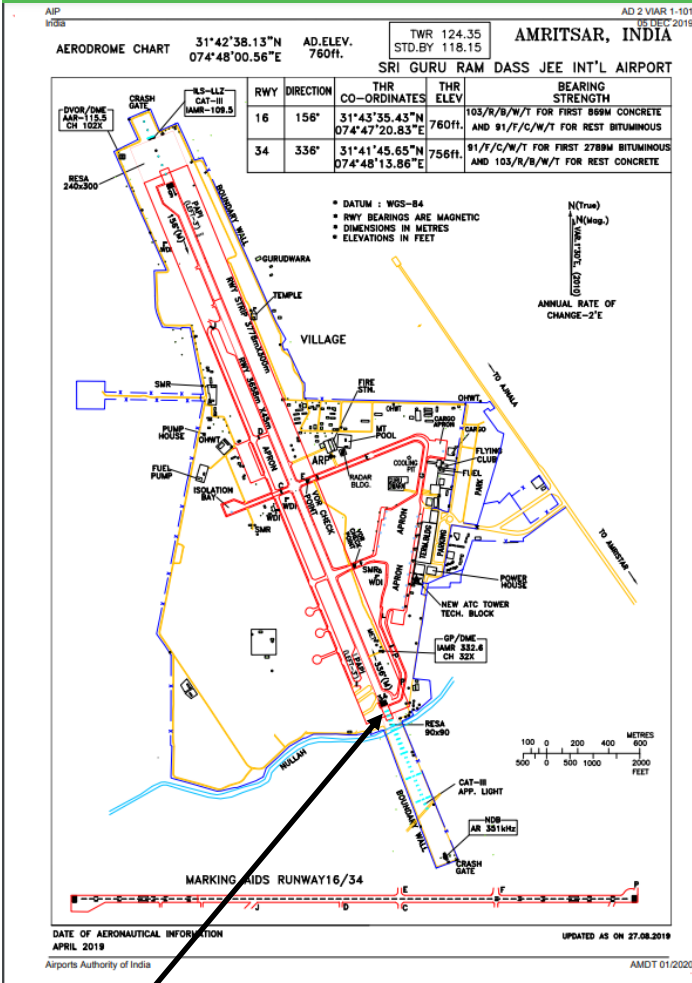
- Obstacles in the circling area, and approach/departure corridors
- Flat agricultural terrain provides ideal conditions for radiation and advection fog.

SRI GURU RAM DASS JEE INTERNATIONAL

VIAR

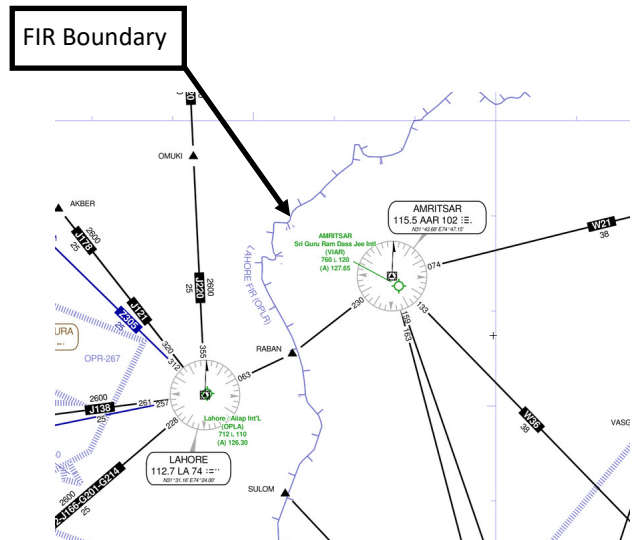
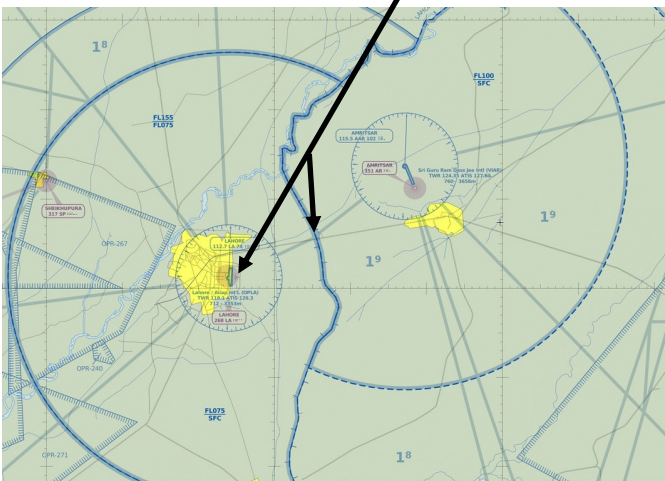
Elevation 760'

Amritsar, India



Runway 34
Best Lights
Best Approach

Lahore International
Shared Airspace boundary
at different altitudes



DME Arc

FIR Boundary

SRI GURU RAM DASS JEE INTERNATIONAL

VIAR

Elevation 760'

Amritsar, India

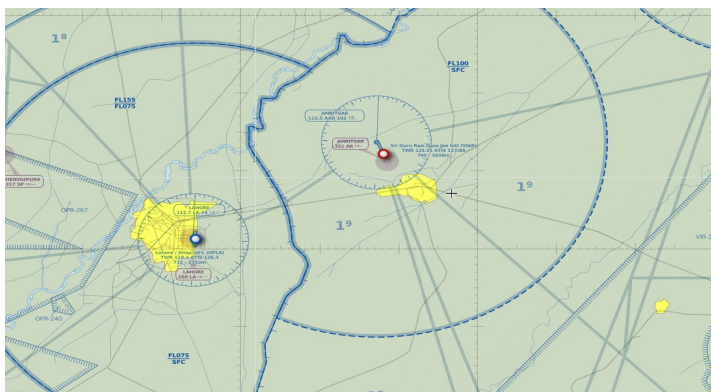
Safety Factors	Instrument Approach Airports in Vicinity
<ol style="list-style-type: none"> 1. Flight training operations 2. Language barriers 3. Obstacles in vicinity 4. Fog/Weather 5. Close proximity to foreign airspace 6. Challenging Approach 	<ol style="list-style-type: none"> 1. OPLA- 23nm (Pakistan)— ILS 2. OPST- 54nm (Pakistan)— ILS 3. VILD- 78nm—VOR 4. OPFA- 95nm (Pakistan) - RNP

Additional Airport Notes
<ul style="list-style-type: none"> • Lodging is located in the vicinity of airport and town • Transport is local pre paid and radio taxi services • MX is unavailable • No listed FBO (Handling service 24hr with prior notice)

Accident/incident History

A search of AAIB India’s reports (1/1/2020 to 4/14/2022) returned no official reports of incidents at VIAR, however any incidents currently under investigation would not be available until after their initial findings were published.

Reference Documents (Double-Click on icon to retrieve)
(AIP)





Updated: April 2022

SRI GURU RAM DASS JEE INTERNATIONAL

VIAR

Elevation 760'

Amritsar, India

Additional Items:

State Department Alerts:

Currently Level two alert for crime and terrorism– exercise increased caution.

<https://travel.state.gov/content/travel/en/international-travel/International-Travel-Country-Information-Pages/India.html>

Vaccination Requirements:

Yellow Fever-Mandatory for travelers entering from an infected area

Covid-19

Passport/ Visa requirements:

Travelers must enter either on a paper visa, valid for 10 years for U.S. citizens, or an e-tourist visa.

Travelers must have two blank pages in their passport and their passport must be valid for at least 6 months.

Miscellaneous:

Possession of a satellite phone is illegal in India.

U.S. Embassy New Delhi:

Shantipath, Chanakyapuri
New Delhi - 110021
India

Telephone: +(91) (11) 2419-8000
E-mail: acsnd@state.gov
[Website](#)

Risk Analysis

Hazard	(Optional) Mitigations—Please fill in your own company mitigations
Flight Training Operations	
Language Barriers	
Obstacles in the vicinity	
Frequent fog/ adverse weather	
Close proximity to foreign airspace	
Challenging approach (DME arc)	