

STEVENS FIELD AIRPORT

KPSO

Elevation 7663'

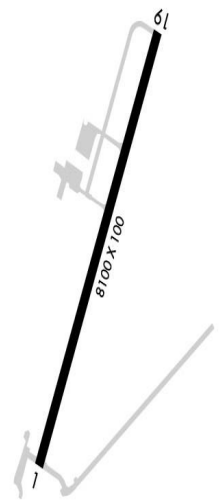
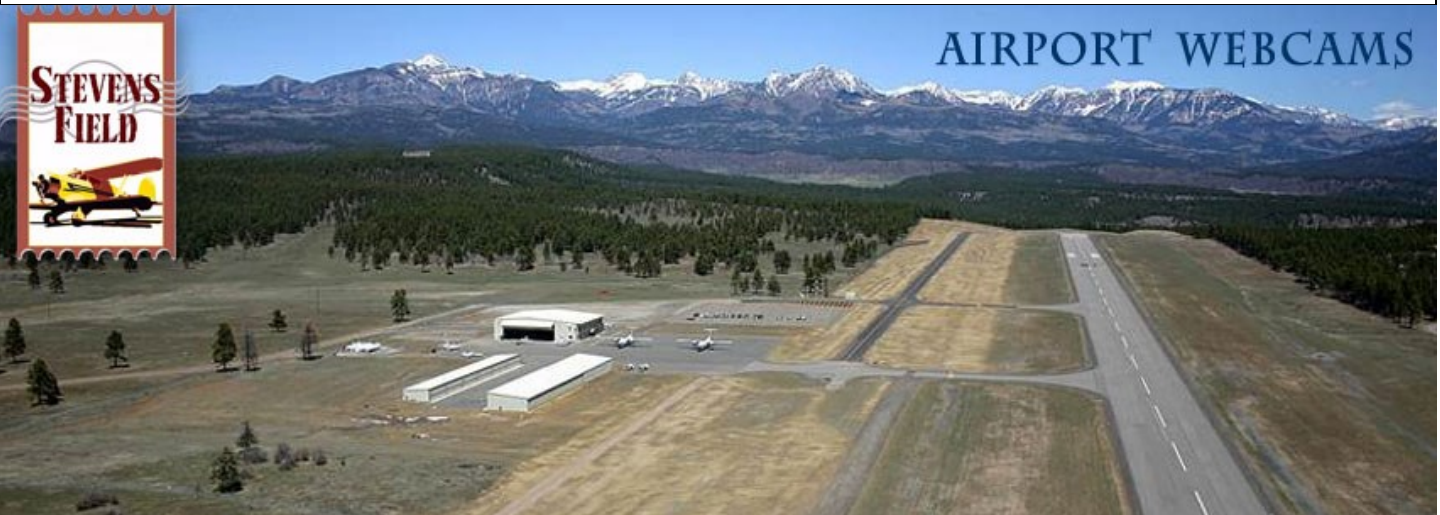
Pagosa Springs, CO

[Airport Website](#)

Airport Overview

Stevens Field (ICAO: **KPSO**, FAA LID: **PSO**) is a public-use airport located two miles northwest of the central business district of Pagosa Springs, Colorado, United States. This general aviation airport is publicly owned by Archuleta County.

The mission of Archuleta County's Stevens Field is to provide the general aviation community with a safe, high quality, professional, well maintained facility that will be an engine for economic development for Archuleta County and surrounding communities.



Longest Runway	Lowest Published Approach Minimums
RWY 01-19: 8100 x 100'	RNAV (GPS) RWY 1: LNAV MDA Cat B 8280 (643) 1



STEVENS FIELD AIRPORT

KPSO

Elevation 7663'

Pagosa Springs, CO

Runway	Surface	Runway Length	Runway Width	LDA	GA/TCH
01	ASPH	8100	100	8100	P 3°/40'
19	ASPH	8100	100	8100	P 3.5°/40'

ATC

TOWER:

Yes

No

Notes: No ARFF on airport. PCN 24 F/B/X/U

AF/D Notes of Interest

- Attended 1500-0000Z±.
- Wildlife on and invof arpt.
- TWY B closed to acft 12.5k lbs and greater.
- Balloon ops invof arpt.
- TPA 8663(1000) for prop acft and 9163(1500) for jet acft.

Terrain/Obstacles

- Airport lies in a high mountain valley.
- Elevated terrain all quadrants up to 13300' MSL within 10 NM.

Safety Factors

- CFIT due to nearby elevated, mountainous terrain.
- Increased risk of NMAC/MAC and runway incursion due to uncontrolled airport status.
- Missed approach or balked landing increases risk of CFIT.
- High airport elevation aircraft performance factors.
- RWY 19 PAPI glidepath of 3.5° higher than standard; increase risk of unstable approach.
- No instrument approach lighting systems available on runways.
- Black hole effect on night approach due to unlit terrain.
- No parallel twy increases risk of runway incursion.

Approach Review

RWY 01	RWY 19
RNAV(GPS)	None Listed

STEVENS FIELD AIRPORT

KPSO

Elevation 7663'

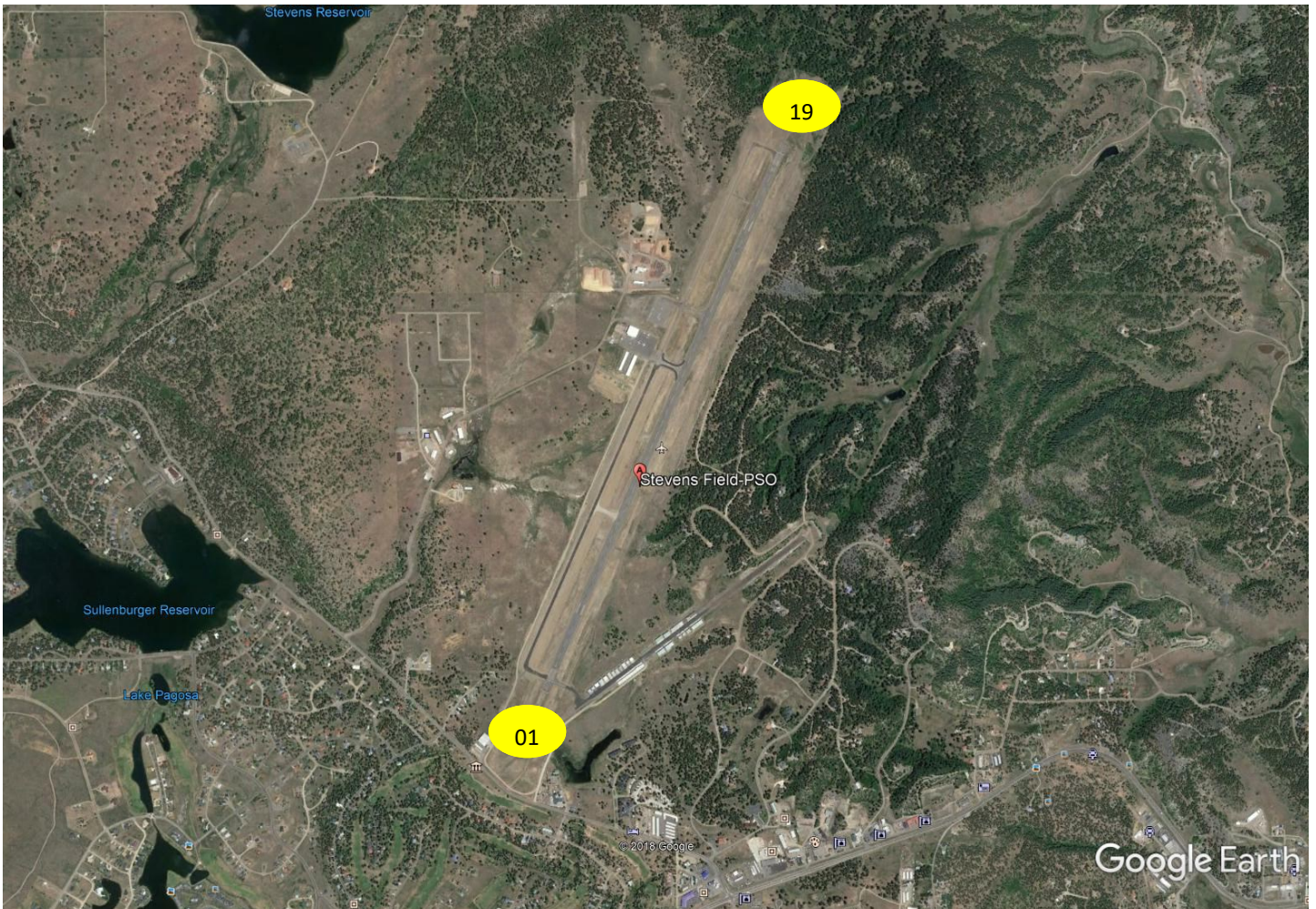
Pagosa Springs, CO

Reference Documents (Double-Click on icon to retrieve)

(AFD)			

Accident/incident History

A search of available databases yielded 4 reports from JAN 2018 to NOV 2022. 1 report was for a wildlife/ birdstrike on a Dassault 900. Two were “near miss” events involving hot air balloons over the airport center-line. The final remaining report was a Piper Archer on a training flight that experienced fuel starvation during a simulated engine out procedure. Due to the multiple reports of near misses involving aircraft and balloons extra vigilance is highly recommended.

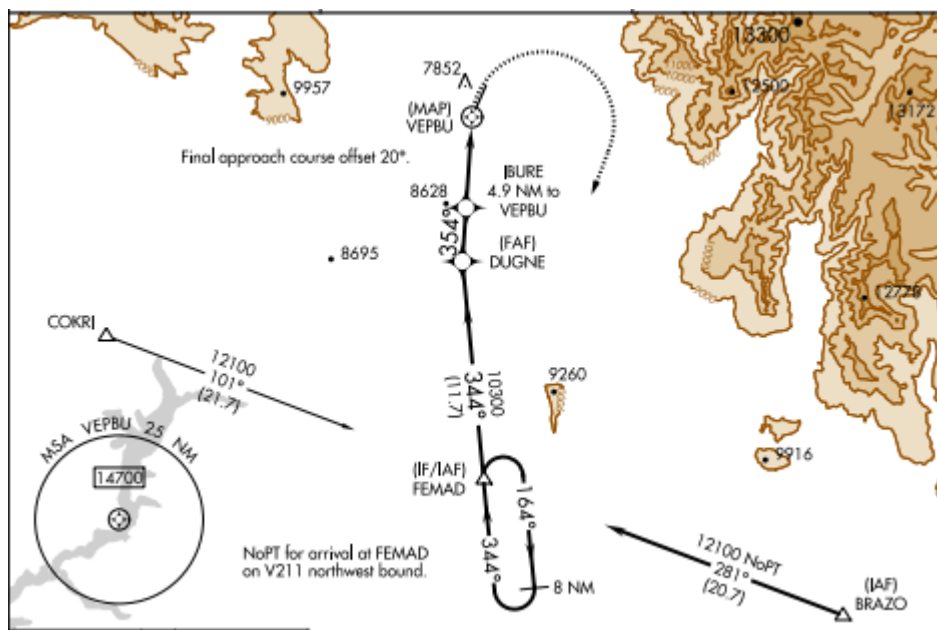
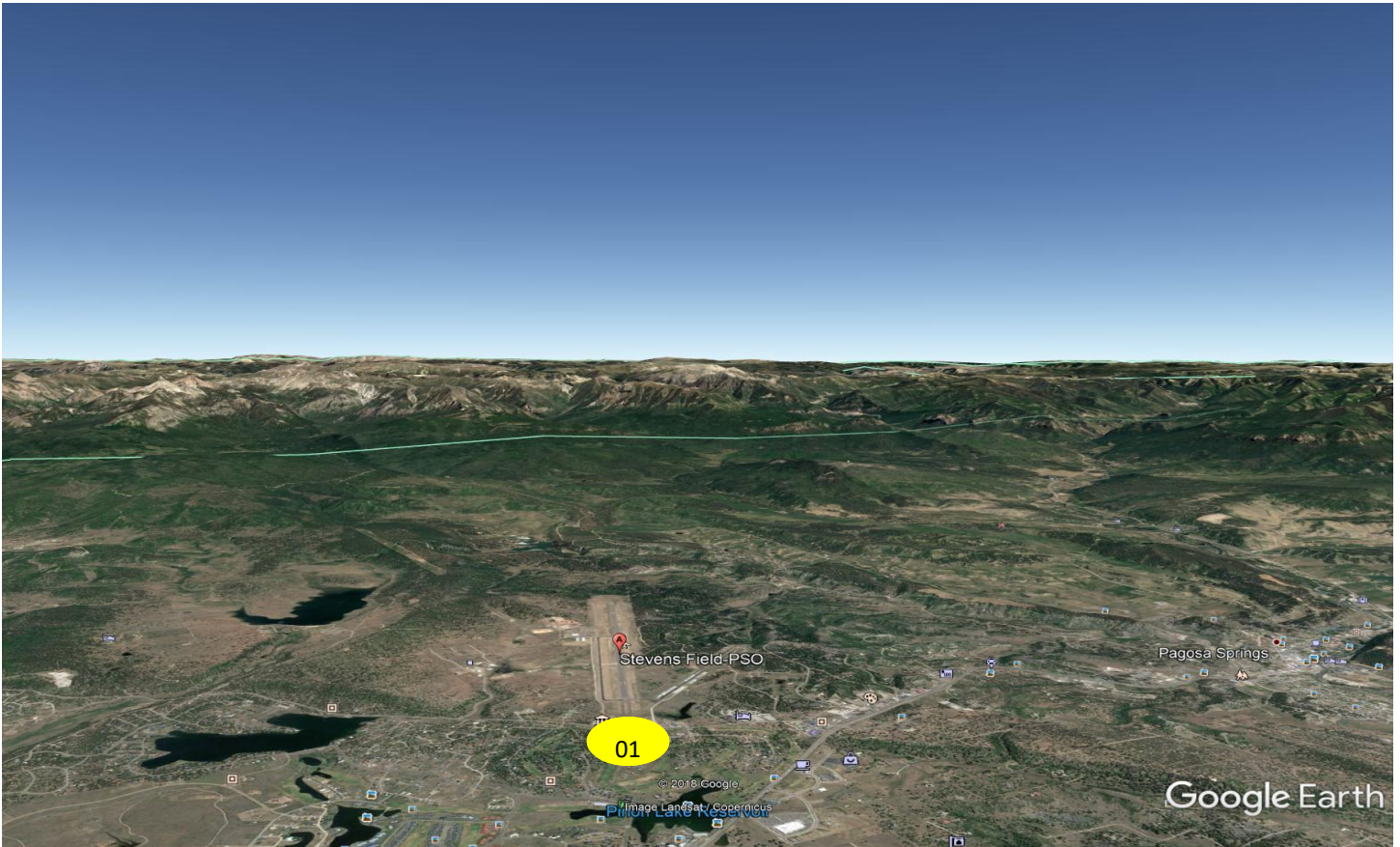


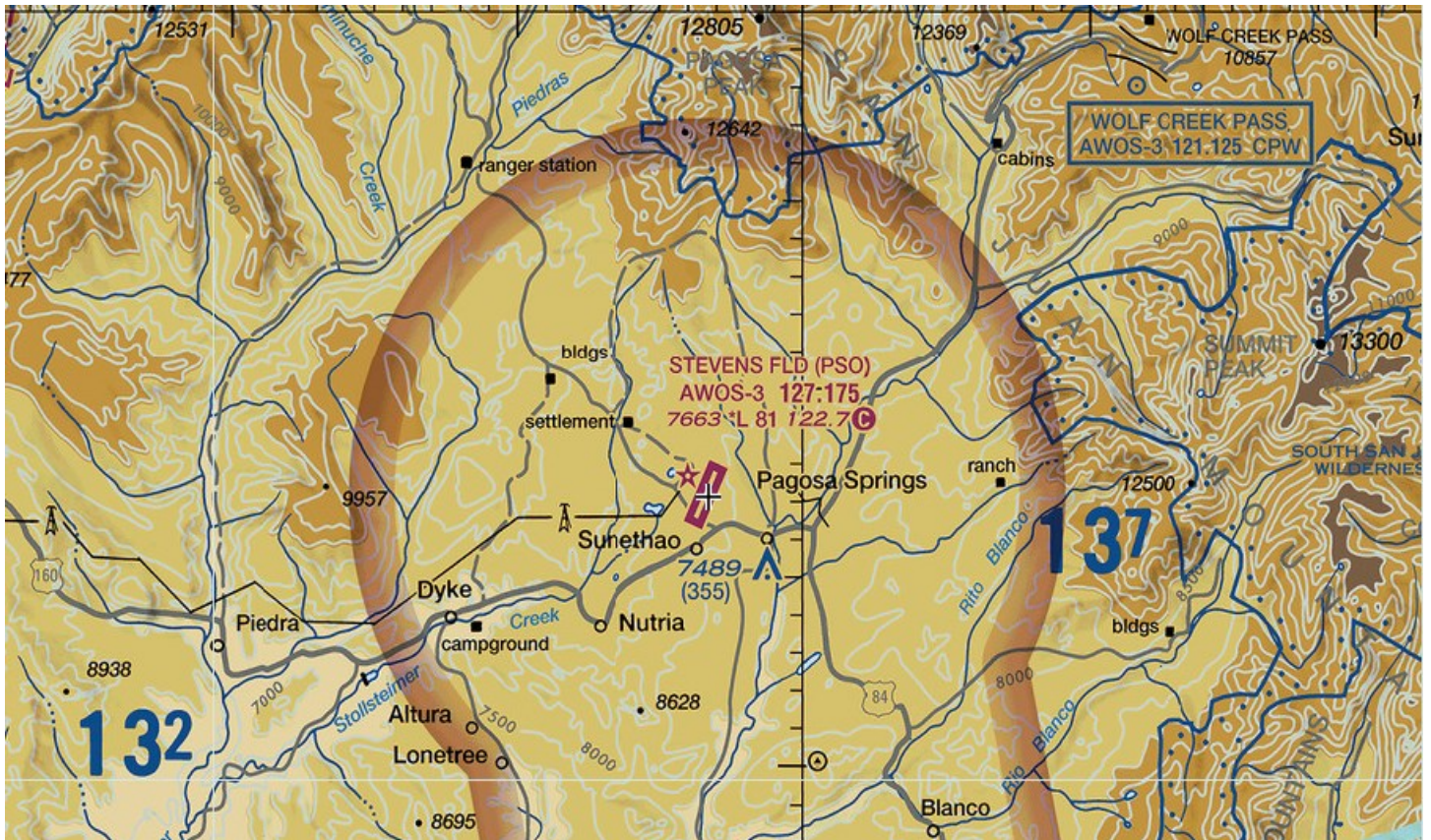
STEVENS FIELD AIRPORT

KPSO

Elevation 7663'

Pagosa Springs, CO





Risk Analysis

Hazard	(Optional) Mitigations—Please fill in your own company mitigations
CFIT due to nearby elevated, mountainous terrain.	
Increased risk of NMAC/MAC and runway incursion due to uncontrolled airport status.	
No parallel twy increases risk of runway incursion.	
Missed approach or bailed landing increases risk of CFIT.	
High airport elevation aircraft performance factors.	
RWY 19 PAPI glidepath of 305° higher than standard; increased risk of unstable approach.	
No instrument approach lighting systems available on runways.	
Black hole effect on night approach due to unlit terrain.	