

PALM BEACH INTERNATIONAL

KPBI

Elevation 20'

West Palm Beach, FL

[Airport Website](#)

Airport Overview

Located just west of Palm Beach City, PBI is the major commercial airport serving Palm Beach and its surrounding suburbs. It is the third busiest airport in the Miami District, just behind Miami International and Fort Lauderdale-Hollywood International. It has a total of 6 numbered runway surfaces, 10L/28R, 10R/28L, and 14/32. The longest of which is 10L/28R at 10,001 ft of length, and 150 ft width. Firefighting is located on the field, and there are several FBO's located along the southside fence. During the 45th President's term, there were periodic TFR's around PBI due to the close proximity of Mar-A-Lago. These have since been changed in size and scope as of 2020. Major airline service is available out of PBI's main terminal and maintenance is provided by numerous facilities on site. Lodging is close by and generally affordable. For crew comfort there are also numerous restaurants in the main terminal, as well as restaurants in the surrounding area accessible by crew car or Uber/Lyft from the FBO.



Longest Runway	Lowest Published Approach Minimums
----------------	------------------------------------

<p>RWY 10L/28R:</p> <p>Length: 10,001 ft x 150 ft</p>	<p>ILS 10L</p> <p>216' RVR: 24 or 1/2mi (200)</p>
--	--



PALM BEACH INTERNATIONAL

KPBI

Elevation 20'

West Palm Beach, FL

Runway	Surface	Light System	Runway Length	Runway Width	LDA	GA/TCH	TDZE
10R	Paved	MIRL, REIL	3214 ft	75 ft	3214	3.0	17 ft
28L	Paved	MIRL, REIL	3214 ft	75 ft	3214	3.0	14 ft
10L	Grooved	HIRL, CL,MALSR,PAPI-R	10,001 ft	150 ft	8800 ft	3.0	20 ft
28R	Grooved	HIRL, CL,MALSR,PAPI-L	9189 ft	150 ft	9190 ft	3.0	16 ft
14	Grooved	MIRL, REIL, PAPI-R	6931 ft	150 ft	6000 ft	3.0	17 ft
32	Grooved	MIRL, REIL, PAPI-L	6931 ft	150 ft	6513 ft	3.25	16 ft

Approach Review			
10L	28R	14	32
ILS, RNAV (Y,Z)	ILS, RNAV (Y,Z)	RNAV (Y,Z)	RNAV (Y,Z)

ATC	
TOWER: 119.10, 118.75	<input checked="" type="checkbox"/> Yes <input type="checkbox"/> No
Notes: ARFF index C, Level D ARFF equipment avail; 24hr PPR Customs avail. Located off approach end of 32 14/32 Load Bearing: PCN 67 F/A/W/T, S-100, D-180, DT-325, DDT- 400 10L/28R Load Bearing: PCN 93 F/B/W/T, S-120, D-175, DT-550, DDT- 840	

AF/D Notes of Interest
<ul style="list-style-type: none"> MIGRATORY BIRDS ON AND INVOF ARPT. BE ALERT: TWY L IS LCTD BTWN RYS 10L/28R & 10R/28L. TWY L IS WIDER AND LONGER THAN RY 10R/28L - DO NOT CONFUSE TWY L FOR RY. AIRCRAFT WITH WINGSPAN OF 118 FT OR GREATER IS PROHIBITED ON TWY L. 24 HR PPR FOR ACFT WITH WINGSPANS GTR THAN 171 FT. NOISE ABATEMENT PROCEDURES IN EFFECT. MULTIENGINE FLIGHT TRAINING PROHIBITED SS TO SR SUN AND HOLIDAY; STRICT ENVIRONMENTAL OPERATING STAGE 2 ACFT 0300-1200Z CALL NOISE ABATEMENT OFFICER 561-471-7467. BE ALERT; RYS 28L & 28R THLDS STAGGERED BY 5400 FT. RWY 10R/28L NOT AVBL FOR SKED ACR OPS WITH MORE THAN 9 PAX SEATS OR UNSKED ACR AT LEAST 31 PAX SEATS.

PALM BEACH INTERNATIONAL

KPBI

Elevation 20'

West Palm Beach, FL

Terrain/Obstacles

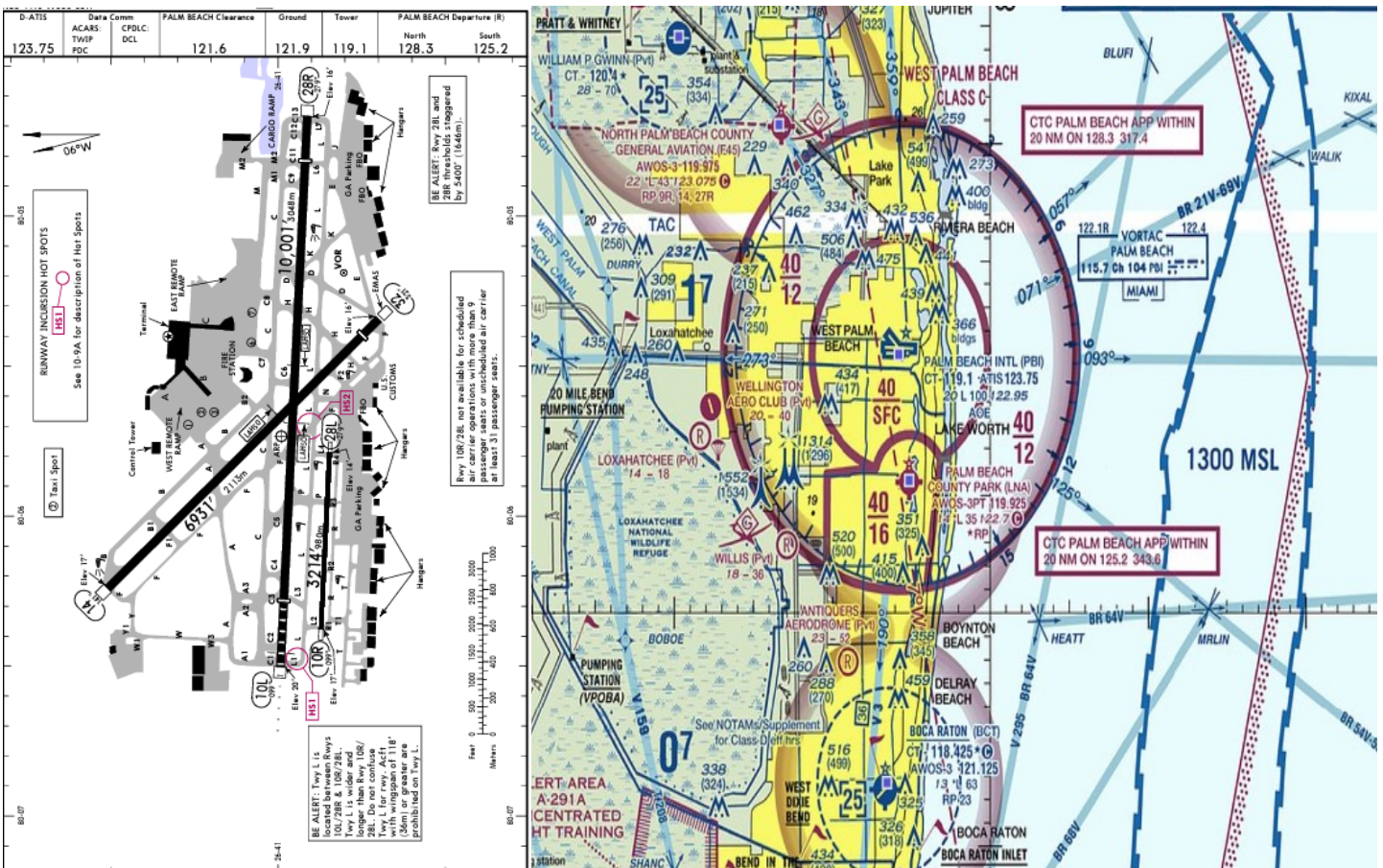
- Multiple Towers and skyscrapers within the Class C airspace, Highest being a single lighted tower at 541 ft MSL due North of the field

Safety Factors

- Light Pollution
- Traffic Density
- Towers in the vicinity
- Hotspots
- Weather-(Florida Thunderstorms)

Additional Airport Notes

- Customs is an actual building, not the "park and wait" that GA is used to.
- Typical Jet runway is 10L/28R



PALM BEACH INTERNATIONAL

KPBI

Elevation 20'

West Palm Beach, FL

Accident/Incident History

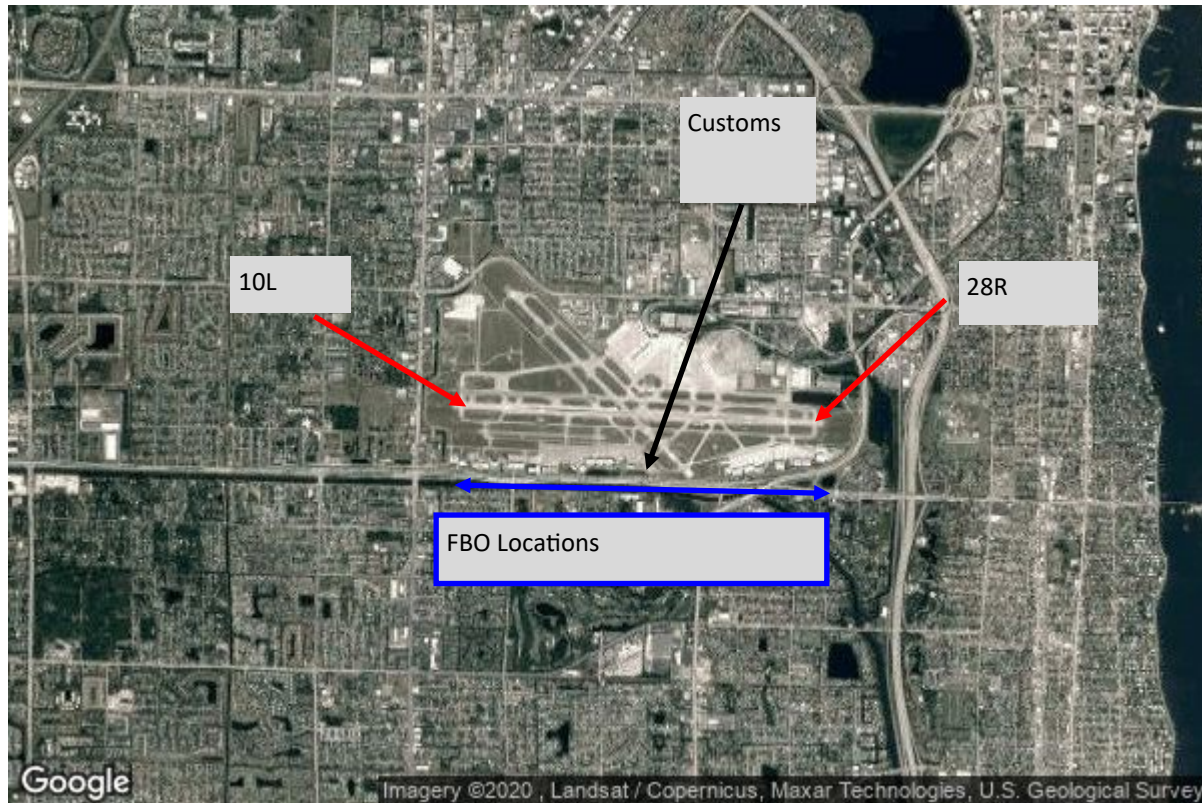
A search of the available databases from January 2021 to January 2023 yielded two pertinent reports.

- Flight Phase : Final Approach
Air carrier First Officer reported aircraft problems possibly associated with 5G interference inbound to PBI.
- Flight Phase : Landing
Pilot reported receiving a Low Altitude Alert from ATC.

Wildlife Reports: 112

Reference Documents (Double-Click on icon to retrieve)

(AFD)	
	



PALM BEACH INTERNATIONAL

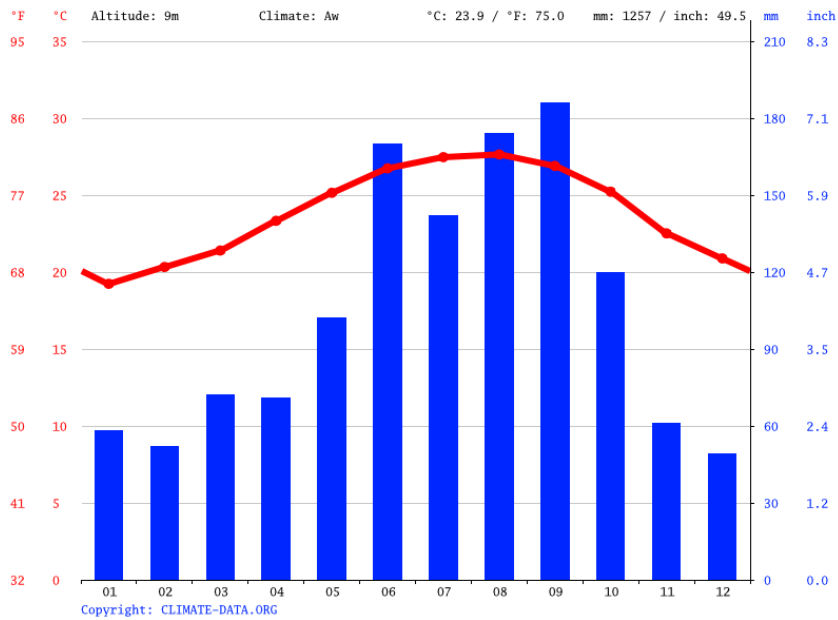
KPBI

Elevation 20'

West Palm Beach, FL

Weather/ Climate

Nestled on the south Atlantic coast of Florida, PBI is subject to, and famous for its tropical thunderstorms. These are becoming more frequent as the climate becomes more unstable. These storms usually last between 15min to 1hr, and are generally present beginning in the early afternoon right into the late evening. Florida is also a known hotspot for Hurricane landfall, and as such good practice dictates that special care be taken when operating into or out of PBI during Hurricane season. See the pictured graph for average monthly temperatures and rainfall. Temp is red line, Rainfall are Blue bars. Graph source: climate-data.org



Risk Analysis

Hazard	(Optional) Mitigations—Please fill in your own company mitigations
Light Pollution	
Traffic Density	
Towers in the Vicinity	
Hotspots	
Weather	