

# FALCON FIELD

KFFZ

Elevation 1394'

Mesa, AZ

[Airport Website](#)

## Airport Overview

**Coordinates: N33°27.65' / W111°43.70'**

Falcon Field was opened prior to WWII when Hollywood producer and pilot John H. Connelly founded Southwest Airways with assistance from Henry Fonda, Fred Astaire, Ginger Rogers, and more. Southwest Airways operated numerous other airfields in Arizona for the purpose of training allied pilots. Falcon Field was named for the British pilots that would train there. FFZ has two parallel runways, the longest of which is 5,100ft long and 100ft wide. The terminal apron parking is limited to 75k lbs for dual wheels, and 45k lbs for single wheel. There is rapidly rising terrain north east of the field, and Boeing operates a heliport 1 mi north of the airport that can be mistaken as a runway.



### Longest Runway

**RWY 04R/22L:**

5100' x 100'

### Lowest Published Approach Minimums

**RNAV RWY 4R:**

1680' 1mi vis (296—1)

Cir NA southeast of Rwy 4R and 22L



# FALCON FIELD

KFFZ

Elevation 1394'

Mesa, AZ

Runway	Surface	Light System	Runway Length	Runway Width	LDA	GA/TCH	TDZE
04R	ASPH	MIRL , REIL, PAPI Left	5100	100	5100	4.00/ 42'	1365'
22L	ASPH	MIRL , REIL, PAPI Left	5100	100	5100	4.00/ 49'	1394'
04L	ASPH-GRVD	MIRL , REIL, PAPI Left	3799	75	3799	4.00/ 42'	1365'
22R	ASPH-GRVD	MIRL , REIL, PAPI Left	3799	75	3799	4.00/ 42'	1386'

Approach Review	
RWY 4R	RWY 4L
RNAV/GPS LP-1680' 1mi	RNAV/GPS LP- 1780' 1mi

ATC	
TOWER: <b>124.60</b> (MAY 15-AUG 15 1230-0400Z, AUG 16-MAY14 1300-0400Z)	<input checked="" type="checkbox"/> Yes <input type="checkbox"/> No
Notes: 04R/22L Load Bearing: S-38, D-60, 2D-90 04L/22R Load Bearing: S-12.5 No Fire fighting Listed	

AF/D Notes of Interest
<ul style="list-style-type: none"> <li>• When ATCT clsd MIRL Rwy 04R-22L and twy lgts preset low ints to increase ints ACTVT-CTAF.</li> <li>• MIRL Rwy 04L-22R unavbl when ATCT clsd. Rwy 22L PAPI does not provide obstruction clnc byd 4.0 NM from threshold.</li> <li>• Voluntary noise abatement procedures in effect. For noise abatement procedures call 480-644-6647.</li> <li>• Noise sensitive areas all quadrants.</li> <li>• Rwy 04L-22R clsd when twr clsd.</li> <li>• When ATCT clsd Rwy 22L has right traffic.</li> <li>• Birds invof arpt. Coyotes and other wildlife occasionally crossing rwys and twys.</li> <li>• Turbulent conditions may be encountered blo 500' AGL near gnd test site 1.5 miles north of arpt.</li> <li>• Rising terrain northeast of arpt.</li> <li>• Extensive fixed wing and rotorcraft flight training activity.</li> <li>• Do not mistake Boeing heliport 1 mile north for a rwy.</li> <li>• TPA-2400 (1006) for light acft, 2900 (1506) for large and turbine-powered acft, 1900 (506) for rotorcraft.</li> </ul>

# FALCON FIELD

KFFZ

Elevation 1394'

Mesa, AZ

## Terrain/Obstacles

- Rising Terrain NE of the field.
- Check NOTAMS for temporary vertical obstructions (i.e. cranes)

## Safety Factors

1. Rapidly Rising Terrain NE of Airport
2. High Volume of rotor and fixed wing training
3. Turbulent conditions 500ft and below
4. Wildlife
5. Non Precision Approaches
6. EMER Freq 121.50 N/A in tower
7. Limited Runway light intensity

## Nearby Navaids

1. IWA (WILLIE) 113.30- 10.2nm
2. PXR (Phoenix) 115.60– 12.3nm
3. LUF (Luke) 113.00– 33.0 nm
4. TFD (Stanfield) 114.80– 35.6 nm

## Additional Airport Notes

- Maintenance is available on site
- Lodging located within 6mi of KFFZ
- Transportation is available—Uber/Lyft, Inquire with FBO for rentals

## Accident/incident History

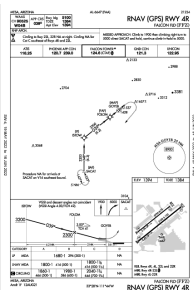
A search of available databases yielded multiple reports between the years 2019-2022. The majority of the incidents were related to roll out, and surprisingly most of them were due to nose gear collapse. As most of these incidents were involving student pilots a detailed description was not deemed necessary. However, the sheer volume of similar reports requires mentioning. A list of the incidents from the ASIAs database will be linked below. Suspected causes include but are not limited to lack of experience and a slightly up sloped runway.

## Reference Documents (Double-Click on icon to retrieve)

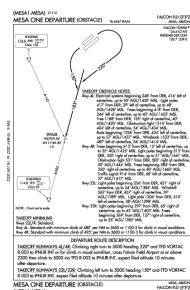
(AFD)



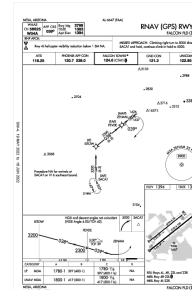
(ASIAs)



GPS 4R  
(click to view)



FFZ Obstacle  
Departure  
(Click to view)



GPS 4L  
(Click to view)

# FALCON FIELD

KFFZ

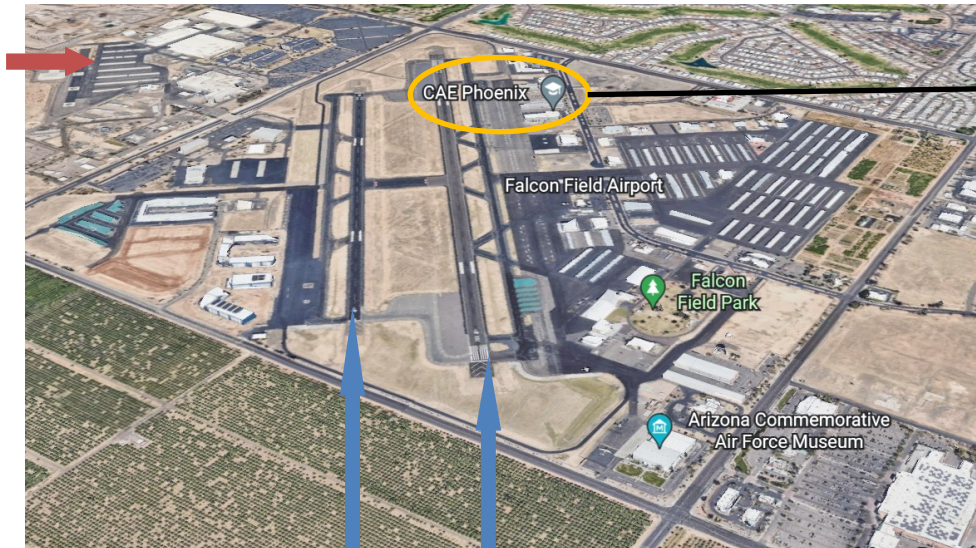
Elevation 1394'

Mesa, AZ



Terrain North of airfield

Boeing Facility



Multiple Flight Schools

04L/22R

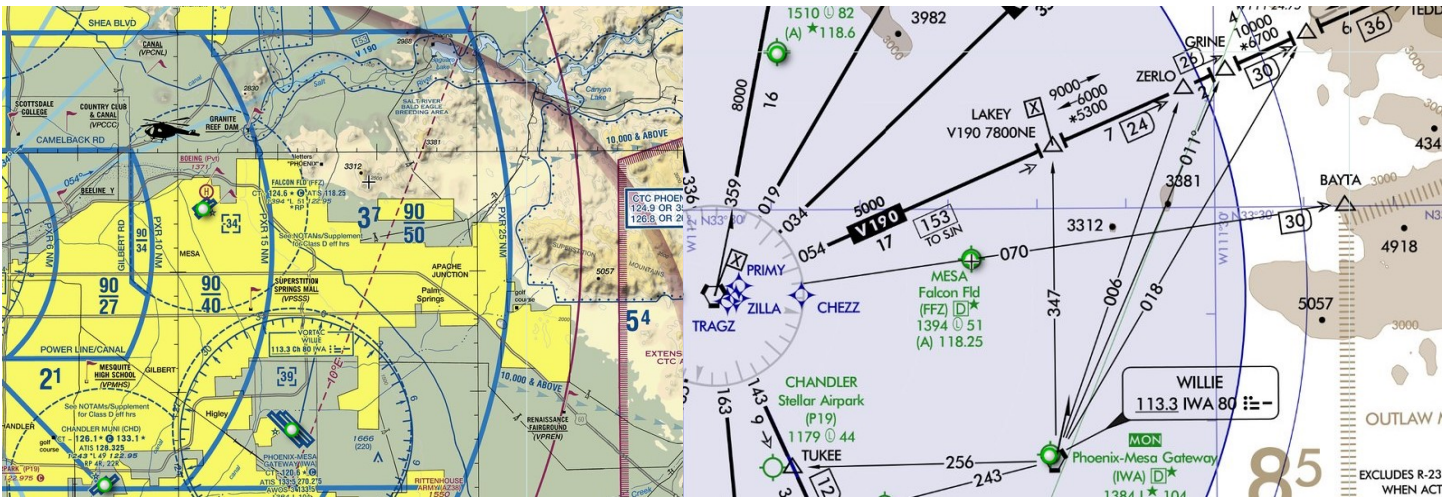
04R/22L

# FALCON FIELD

KFFZ

Elevation 1394'

Mesa, AZ



## Risk Analysis

Hazard	(Optional) Mitigations—Please fill in your own company mitigations
Terrain	
Heavy Training Activity	
Limited Runway Lighting	
Wildlife	
Turbulence below 500'	
Non Precision Approaches Only	
Guard (121.5) not available in tower.	